



AMTICO ASSURA LAUNCH 2011

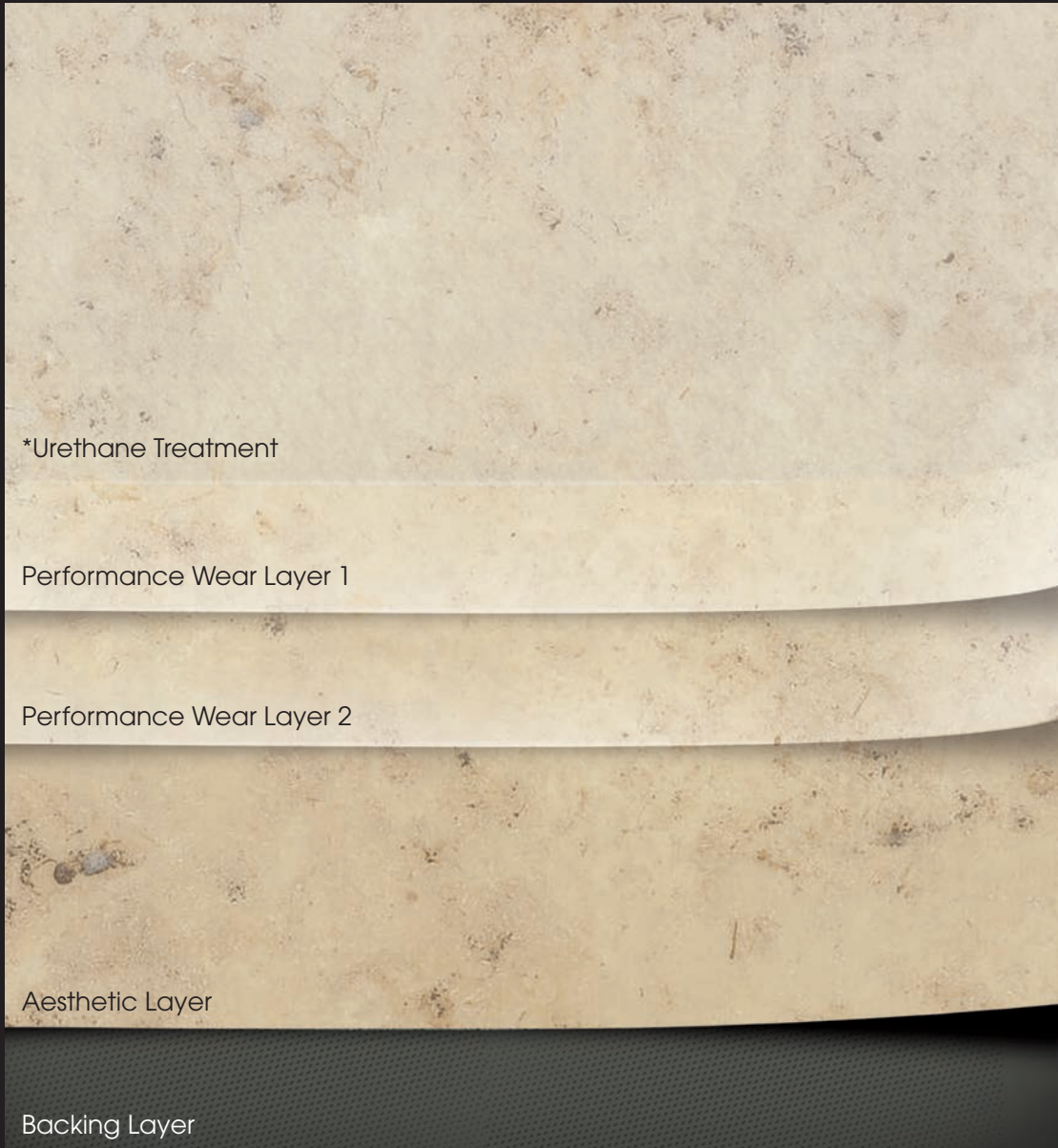
Amtico[®]
assura

THE MODIFIED WEAR LAYER OF AMTICO ASSURA OFFERS ENHANCED SLIP RESISTANCE WITHOUT COMPROMISING AESTHETICS.

ASSURA'S SLIP PERFORMANCE CHARACTERISTICS PROVIDE THE BEST BALANCE BETWEEN DESIGN FLOORING AND SAFETY FLOORING, WHILE STILL BEING EASY TO MAINTAIN. ALTHOUGH NOT CLASSIFIED AS A SAFETY FLOOR, AMTICO ASSURA MEETS INTERNATIONALLY RECOGNIZED EUROPEAN AND US SAFETY STANDARDS.

ASSURA'S 26 FINISHES PROVIDE A BROADER RANGE OF DESIGNS AND LAYOUTS, UNLIKE MANY TRADITIONAL SAFETY FLOORS, WHILE STILL MAINTAINING A HIGH LEVEL OF DURABILITY AND PERFORMANCE WITH A 20 YEAR WEAR-OUT WARRANTY. CHOOSE FROM WOOD, STONE OR ABSTRACT, UTILIZING THE VERSATILITY OF AMTICO ASSURA, HIGH DESIGN, ENHANCED SLIP RESISTANCE, TO RETAIN A HIGH-CLASS FINISH WHERE A HIGH PERFORMANCE FLOOR IS REQUIRED.

Amtico[®]
assura



*Urethane Treatment

Performance Wear Layer 1

Performance Wear Layer 2

Aesthetic Layer

Backing Layer

Urethane Treatment

A surface that protects against everyday wear and tear. Added slip, scuff and stain resistance and lower maintenance.

Performance Wear Layer 1 and 2

Impregnated with engineered ceramic particles for improved slip resistance in wet conditions. These high density wear layers are designed to withstand indentation and protect against everyday wear and tear. High durability. (R10 rating)

Aesthetic Layer

Created by our in-house design team.

Backing Layers

Made from 100% recycled materials (the whole product is 100% recyclable).

*Urethane is standard on all products (with exceptions).
Please refer to the product sections for further details.

AMTICO ASSURA MULTIPLE PERFORMANCE SYSTEM



AMERICAN OAK

NATURAL LOOKS



IVORY MAPLE

AA0W7470



FUSED BIRCH

AA0W7500



CLASSIC OAK

AA0W7430



LIGHT CHERRY

AA0W7060



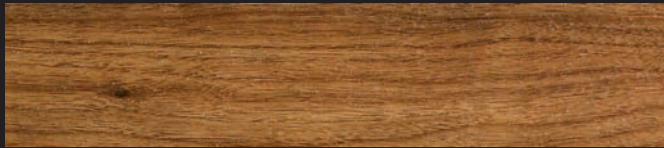
AMERICAN OAK

AA0W7050



WASHED TEAK

AA0W5990



TEAK

AA0W6990



ANTIQUE WOOD

AA0W7190



CHERRY

AA0W7000



WILD WALNUT

AA0W7620



LIMED GREY WOOD

AA0W7670

Size availability:

76mm x 915mm (3" x 36"), 114mm x 915mm (4.5" x 36"), 152mm x 915mm (6" x 36")

Fused Birch is also available as:

305mm x 305mm (12" x 12"), 305mm x 457mm (12" x 18"), 457mm x 457mm (18" x 18")

Finish:

Tick wood grain with bevelled edges and urethane coating

Price Point:

Advanced

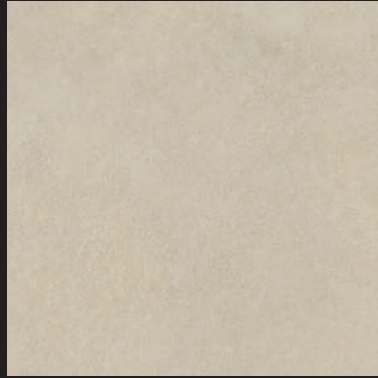


FOSSIL LIMESTONE

ENHANCED PERFORMANCE



HONED LIMESTONE NATURAL
AA0SLH11



LIMESTONE
AA0SLK14



SEDIMENTARY SANDSTONE LIGHT
AA0SSD14



JURA YELLOW
AA0SJA75



FOSSIL LIMESTONE
AA0SFL33



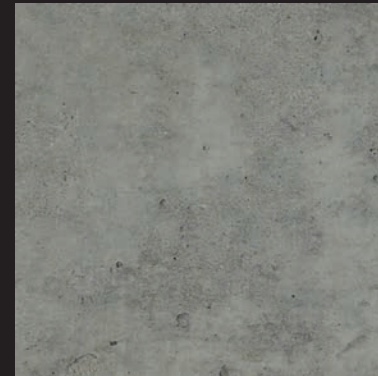
COMPOSITE CALCIUM
AA0SGN11



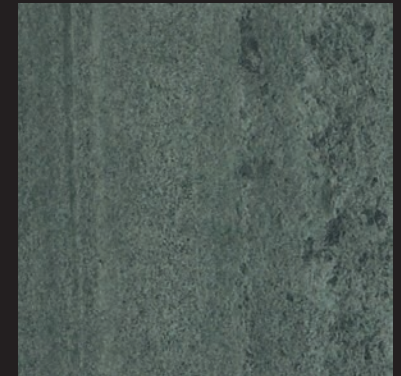
COMPOSITE PUMICE
AA0SGN31



COMPOSITE FLINT
AA0SGN32



EXPOSED CONCRETE
AA0SEC30



CUMBRIAN SLATE
AA0SSL32

Size availability:

305mm x 305mm (12" x 12"), 305mm x 457mm (12" x 18"), 457mm x 457mm (18" x 18")

Finish:

Ceramic with bevelled edges and urethane coating

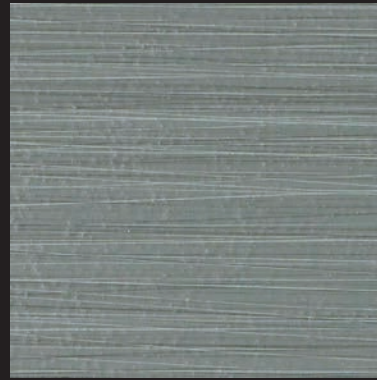
Price Point:

Advanced



LINEAR METALLIC STEEL

HIGH DESIGN



LINEAR CHALK
AA0ALA11

LINEAR SHALE
AA0ALA31

LINEAR GRAPHITE
AA0ALA33

LINEAR METALLIC STEEL
AA0ALA21

BACK TO BLACK VAMP
AA0ABB22

Size availability:

305mm x 305mm (12" x 12"), 305mm x 457mm (12" x 18"), 457mm x 457mm (18" x 18")

Back to Black Vamp is also available as:

76mm x 915mm (3" x 36"), 114mm x 915mm (4 1/2" x 36"), 152mm x 915mm (6" x 36")

Finish:

Linear - Ceramic with bevelled edges and urethane coating

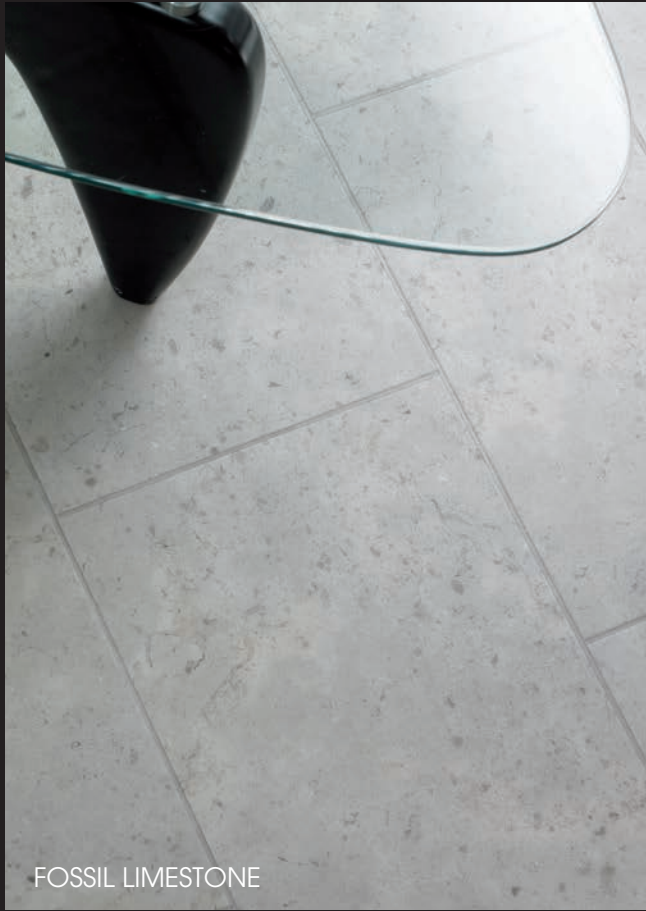
Back to Black - Tick wood grain with bevelled edges

Price Point:

Advanced



WILD WALNUT



FOSSIL LIMESTONE



LINEAR GRAPHITE

Please refer to our website for detailed warranty information, FloorCare and installation instruction



