

1. Give special attention to

1. Give special attention to:
 - Any obstructions to ceiling pockets & cables (i.e. ducts, sprinkler pipes, drain pipes, electrical conduits, etc).
 - Tolerances of fixed walls & finished floor.
 - Removable ceiling tile for top of pocket.

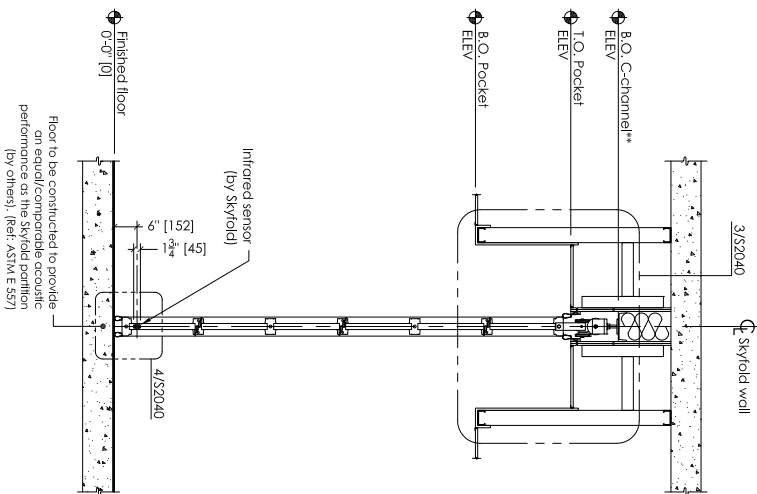
Double laminated glass = 42, as per industry standards

*SEE NOTE 3 FOR APPLICABLE PANEL COMPOSITION

Mirage system is not currently rated

3. Panel composition: XXXXXXXXXXXXXXXXXXXXXXXX
Frame finish: Silver metallic.

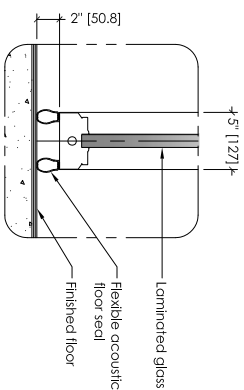
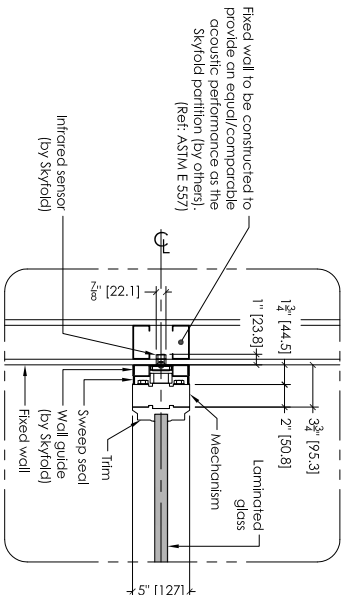
4. Skylight requires two 24×24 [610 x 610] (minimum) access points in acoustic ceiling directly beside motor for installation & maintenance of system. Not required if finished ceiling is suspended ceiling tiles.
5. Drive unit to be installed prior to construction of acoustic baffle & pocket. All pocket construction (gypsum, suspended ceiling tile, framing, etc.) is by others.
6. The floor underneath the wall along its axis must be flat to within $\frac{1}{8}$ [6] over the entire length of the wall. A peak to valley undulation of $\pm \frac{1}{4}$ [6] must not be closed together than 24 [610]. A peak to valley undulation of $\pm \frac{3}{8}$ [3] must not be closer together than $12'$ [305].
7. Do not scale from this drawing. All dimensions must be verified on site.
8. Dimensions in [] are in millimeters (mm) unless noted otherwise.



D	SECTION - WALL DOWN
---	---------------------

S2039 | SCALE: 3/8" = 1'-0"

S2039 | SCALE: 1/2" = 1'-0"



2 | END SEAL DETAIL

4	FLOOR SEAL DETAIL
---	-------------------

As noted	Date	Approved by	Date	Drawn by	Sheet No.	Project No.	Contractor	Architect
As noted					2 of 2	SP-010	CHS	CHS
Revision								
4								
62040								