

**THINK DESIGN**  
**THINK SPACE**  
**THINK**

# VERTICAL

# VERTICAL IS INNOVATION

**A RETRACTABLE WALL  
SYSTEM THAT DELIVERS  
WHAT IT CLAIMS – UNRIVALED  
ACOUSTICAL PERFORMANCE  
AND FLEXIBILITY LIKE NO OTHER  
WALL SYSTEM, ALL WITH AN  
ELEGANT, SOPHISTICATED  
DESIGN. FOR THE BEST  
TOOL IN SPACE DIVISION  
– THINK VERTICAL.**

With a variety of materials or finishes, used alone or in combination, Skyfold walls can not only compliment but enhance your vision of the space. For freedom of design and unparalleled functionality – **THINK SKYFOLD.**

Vertical innovation lets you redefine any space, quickly and easily: from WOOD VENEER (01), METAL (02), VINYL, FABRIC, LAMINATE, PAINTED FINISHES (03), create your own Custom Design (04), or Glass (05).





**VERTICAL IS  
NATURAL**



**01**  
**NATURAL VERTICALITY  
THAT REDEFINES  
HEIGHT**

Superior acoustical performance and efficient functionality, all with the rich natural look of wood veneer. Available in the variety of species and finishes, wood is always in season.



# VERTICAL IS SOUND

**WHEN SPACE DIVISION REQUIRES  
ACOUSTICAL SEPARATION, WHY  
NOT USE THE BEST? FOR THE  
ULTIMATE IN FLEXIBILITY AND  
ACOUSTICAL PRIVACY**

**– THINK SKYFOLD**

From stopping sound transmission to absorbing sounds, Skyfold offers a range of acoustical options for any type of space.

**Advantages to using Skyfold include:**

- /// Keypad operation... Easy to use
- /// Industry's best acoustics with STC's up to 60 (Rw 59)
- /// Reconfigure spaces in minutes vs hours
- /// Clean appearance - no tracks on the floor, walls or ceiling
- /// Unlimited finishes to enhance the space
- /// Saves valuable floor space by stacking in the ceiling
- /// Light weight system designed to use less structural steel
- /// Reliable system saves on maintenance costs





**VERTICAL IS  
SOPHISTICATED**



02


**POWERFUL VERTICALITY  
THAT SHINES AROUND  
THE WORLD**

Accentuate your design with a variety of available metal finishes. Whether it's the luster of stainless steel or the mirror-like polish, to the shimmering or textural appearance of finished metals, you can have it all. The look can be bold or industrial, to sleek or contemporary. Custom metal retractable walls offer endless design possibilities.





**VERTICAL IS  
ELEGANT**



No need to settle from a limited selection of standard finishes. Choose from a wide range of options to satisfy the design aesthetics of the space. For a wall that meets your acoustical and space configuration requirements plus your design criteria - THINK SKYFOLD.

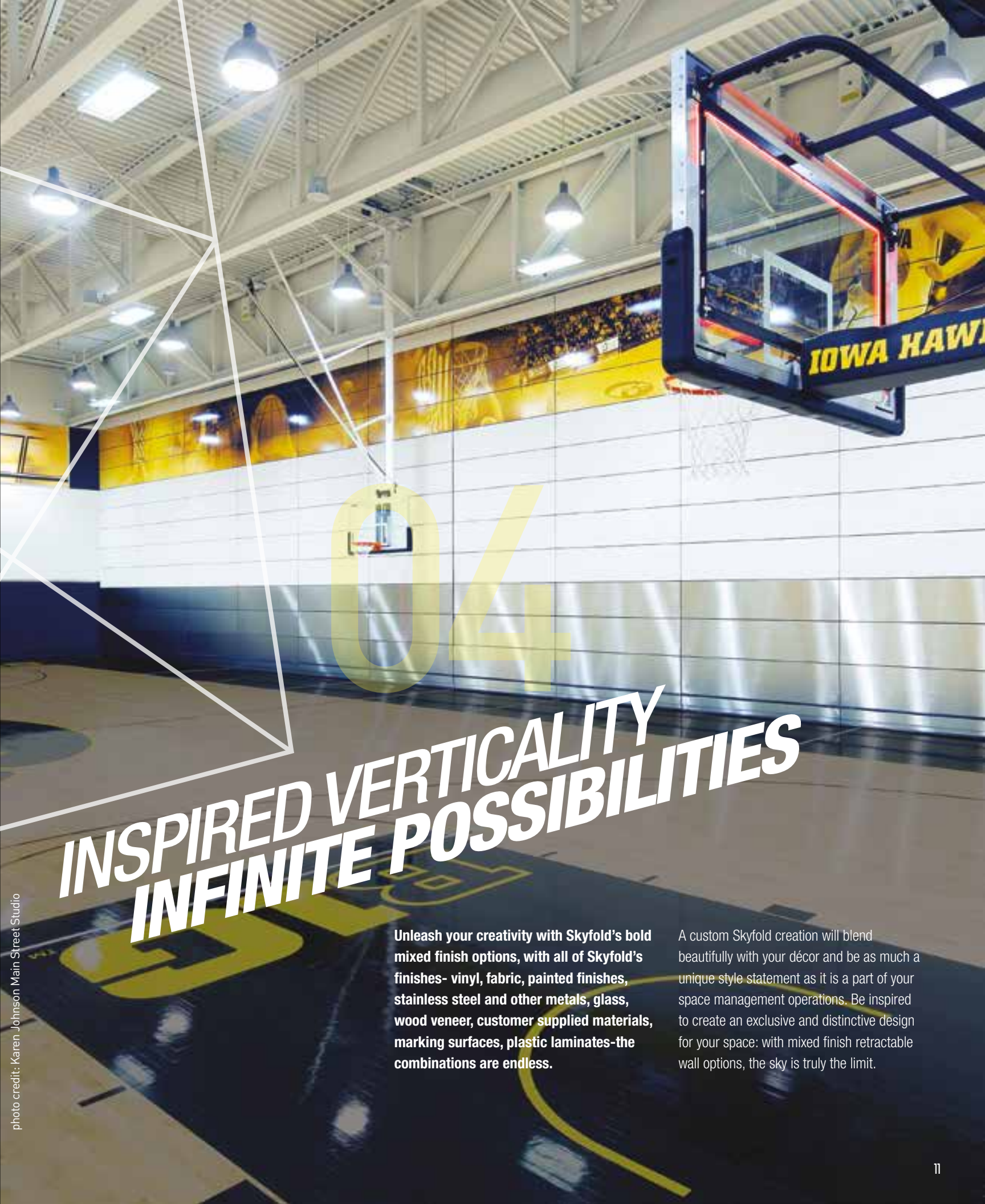
Fabrics from the largest fabric houses, a wide variety of vinyls, laminates with texture and style, standard and custom paint finishes, marker surfaces for a working space – the design possibilities are unlimited.

**MAJESTIC VERTICALITY  
THAT REDEFINES  
THE HORIZON**





**VERTICAL IS  
INSPIRING**



**INSPIRED VERTICALITY  
INFINITE POSSIBILITIES**

Unleash your creativity with Skyfold's bold mixed finish options, with all of Skyfold's finishes- vinyl, fabric, painted finishes, stainless steel and other metals, glass, wood veneer, customer supplied materials, marking surfaces, plastic laminates-the combinations are endless.

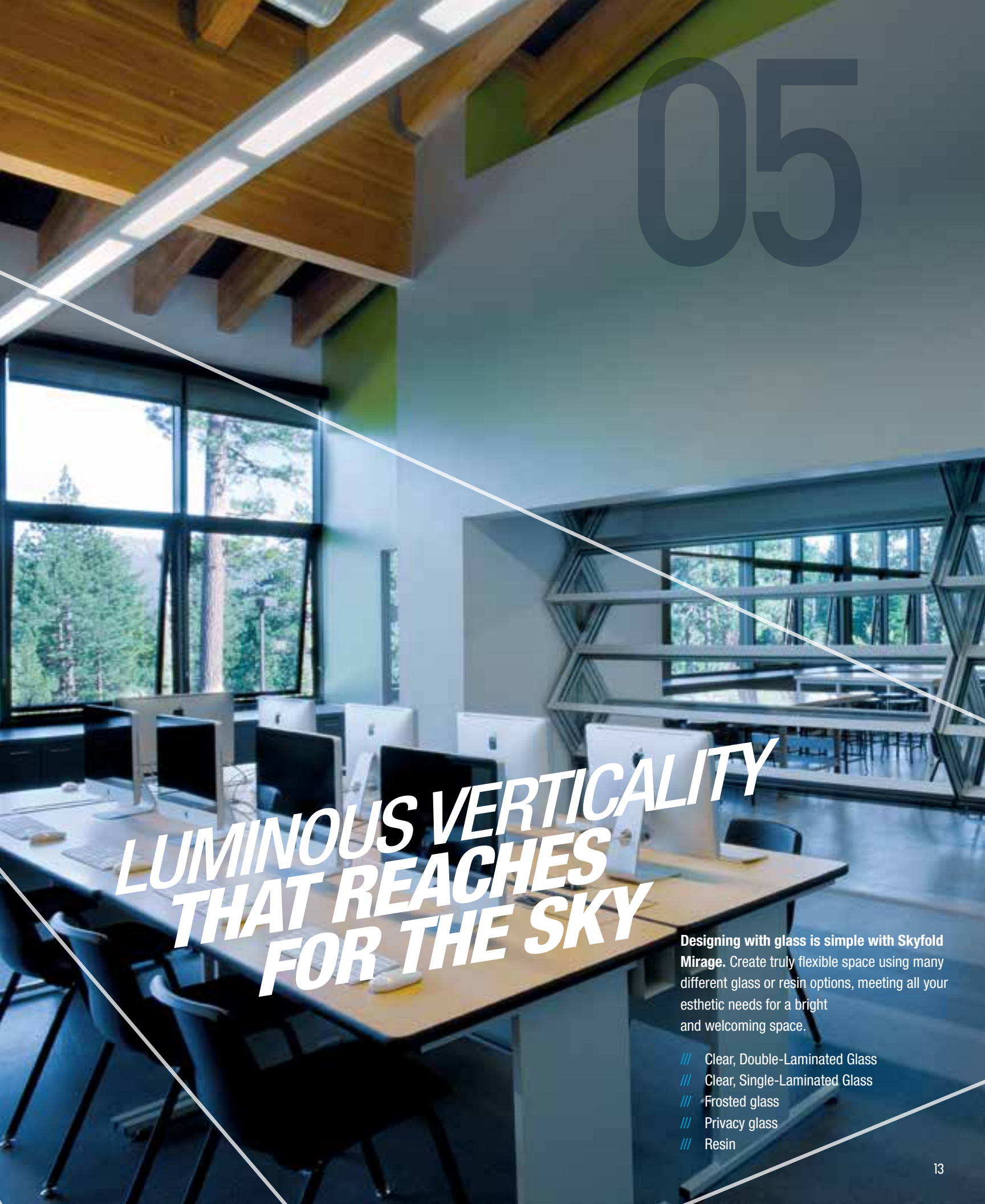
A custom Skyfold creation will blend beautifully with your décor and be as much a unique style statement as it is a part of your space management operations. Be inspired to create an exclusive and distinctive design for your space: with mixed finish retractable wall options, the sky is truly the limit.

photo credit: Karen Johnson Main Street Studio





**VERTICAL IS  
BRIGHT**



05

**LUMINOUS VERTICALITY  
THAT REACHES  
FOR THE SKY**

Designing with glass is simple with Skyfold Mirage. Create truly flexible space using many different glass or resin options, meeting all your esthetic needs for a bright and welcoming space.

- /// Clear, Double-Laminated Glass
- /// Clear, Single-Laminated Glass
- /// Frosted glass
- /// Privacy glass
- /// Resin



# **YOU CAN FIND SKYFOLD WALLS AROUND THE GLOBE.**

## **APPLICATIONS INCLUDE:**

- /// Corporate boardrooms
- /// Training rooms
- /// Auditoriums
- /// Educational institutions
- /// Convention centers
- /// Hospitals
- /// Government facilities
- /// Sports facilities
- /// Hotels
- /// Airports
- /// and many more...

**VERTICAL IS  
INFINITE**  
**BOUNDLESS VERTICALITY  
THAT LIBERATES  
DESIGN**



HERE'S A SMALL SAMPLE OF THE  
MANY VARIED FINISHES THAT  
CAN BE USED WITH SKYFOLD WALLS.

WOOD



▲ ASH, OLIVE BURL



▲ WALNUT - PLAIN SLICED



▲ ETIMOEO



▲ WENGÉ - PLAIN SLICED



▲ NATURAL BIRDSEYE  
MAPLE GLOSS - ITALIA



▲ RECONSTITUTED  
ZEBRA - METRO



▲ LINEAR GRAPHITE



▲ ELM CARPATHIAN BURL

FABRIC AND LEATHER



▲ DOMINO



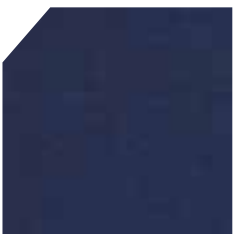
▲ COGNAC



▲ CARAMEL



▲ OAK MOSS



▲ CERTAIN 465949



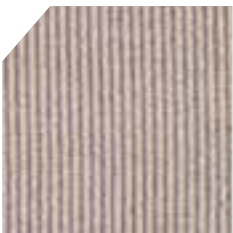
▲ SPIRAL 901882



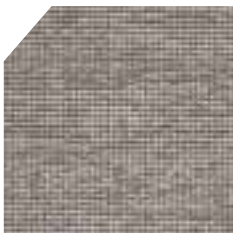
▲ MODERATE 511459



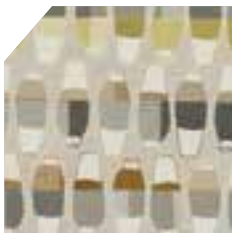
▲ COURSE 399443



▲ CHENILLE STRIPE  
459820



▲ STEADY CRYPTON  
465946



▲ VASES 466164



▲ HALLINGDAL 460760

PAINT



VINYL



We work with several highly reputable suppliers, each specialists in their respective field. we invite you to visit their websites for even more finish options - Let their wide range of finishes inspire your design.

[www.knoll.com](http://www.knoll.com)

[www.maharam.com](http://www.maharam.com)

[www.designtex.com](http://www.designtex.com)

[www.terratex.com/](http://www.terratex.com/)

[www.chemetal.com](http://www.chemetal.com)

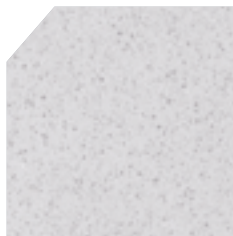
[www.metalresources.net](http://www.metalresources.net)

[www.ecodomo.com](http://www.ecodomo.com)

LAMINATE



▲ SPLENDOR



▲ QUARZITE 3044



▲ DEEPLINE



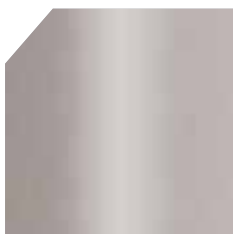
▲ METALIZED 2047/45



GLASS



METAL



▲ 711 - STAINLESS STEEL



▲ 721 - OILED BRONZE



▲ 313 - RENAISSANCE



▲ 380 - WEATHERED STEEL



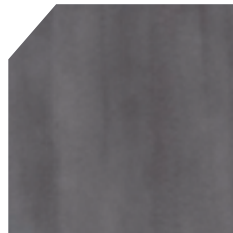
▲ 414 - NOMADIC



▲ 449 - RIPPLE



▲ 268 - EXTROVERT



▲ 353 - ALU MEDIUM



SKYFOLD PRODUCT LINE  
COMPARISON SUMMARY

	Skyfold Classic 51	Skyfold Classic 55	Skyfold Classic 60	Skyfold Classic NRC		Skyfold Zenith 48	Skyfold Zenith 51	Skyfold Zenith 55	Skyfold Zenith 60	Skyfold Zenith NRC	Skyfold Mirage
TECHNICAL (IMPERIAL)											
STC (System)	51	55	60	50		48	51	55	60	50	-
STC (Panel)	61	61	66	60		57	61	61	66	60	-
NRC (System)	-	-	-	Up to 0.65		-	-	-	-	Up to 0.65	-
Max Height (ft.)	36	36	28	36		12	12	12	12	12	24
Max Length (ft.)	Unlimited	Unlimited	Unlimited	Unlimited		48	48	48	48	48	Unlimited
Weight (lbs/sq.ft.)	7	7.6	9.4	7.5		6	6.2	6.8	8.6	6.5	8
Available Finishes	Various <sup>(1)</sup>	Various <sup>(1)</sup>	Various <sup>(1)</sup>	Fabric only <sup>(4)</sup>		Limited <sup>(3)</sup>	Various <sup>(1)</sup>	Various <sup>(1)</sup>	Various <sup>(1)</sup>	Fabric only <sup>(4)</sup>	Various <sup>(2)</sup>
Ceiling space required for storage (ft.) - (approx.)	2'-0"to 6'- 4"	2'-0"to 6'- 4"	2'-0"to 5'-0"	2'-0"to 6'-4"		2'-0"to 2'-8.25"	2'-0"to 2'-8.25"	2'-0"to 2'-8.25"	2'-0"to 2'-8.25"	2'-0"to 2'-8.25"	3'-2"to 4'-9"
Pocket Width (ft.) - (approx.)	55" to 69"	55" to 69"	55" to 69"	55" to 69"		47.75" to 62.75"	47.75" to 62.75"	47.75" to 62.75"	47.75" to 62.75"	47.75" to 62.75"	44" to 61"
TECHNICAL (METRIC)											
RW (System)	51	54	59	49		47	51	54	59	49	-
RW (Panel)	60	60	64	58		55	60	60	64	58	-
SAC (System)	-	-	-	Up to 0.65		-	-	-	-	Up to 0.65	-
Max Height (mm)	11,000	11,000	8,535	11,000		3,660	3,660	3,660	3,660	3,660	7,315
Max Length (mm)	Unlimited	Unlimited	Unlimited	Unlimited		14,600	14,600	14,600	14,600	14,600	Unlimited
Weight (kg/m²)	34.2	37.1	46	36.6		29.3	30.4	33.3	42	32.8	39.1
Available Finishes	Various <sup>(1)</sup>	Various <sup>(1)</sup>	Various <sup>(1)</sup>	Fabric only <sup>(4)</sup>		Limited <sup>(3)</sup>	Various <sup>(1)</sup>	Various <sup>(1)</sup>	Various <sup>(1)</sup>	Fabric only <sup>(4)</sup>	Various <sup>(2)</sup>
Ceiling space required for storage (mm) - (approx.)	615 to 1,960	615 to 1,960	615 to 1,530	615 to 1,960		615 to 820	615 to 820	615 to 820	615 to 820	615 to 820	965 to 1,450
Pocket Width (mm) - (approx.)	1,385 to 1,750	1,385 to 1,750	1,385 to 1,750	1,385 to 1,750		1,210 to 1,595	1,210 to 1,595	1,210 to 1,595	1,210 to 1,595	1,210 to 1,595	1,105 to 1,550
ADDITIONAL FEATURES											
Auto-reverse	Y	Y	Y	Y		Y	Y	Y	Y	Y	Y
Floor track	N	N	N	N		N	N	N	N	N	N
Wall tracks	N	N	N	N		N	N	N	N	N	Y
Obstruction Safety Sensor	Y	Y	Y	Y		Y	Y	Y	Y	Y	N
Infrared Sensor	N	N	N	N		N	N	N	N	N	Y
Back-Up Operation	Y	Y	Y	Y		Y	Y	Y	Y	Y	Y
AVAILABLE OPTION											
10-year parts warranty	Y	Y	Y	Y		Y	Y	Y	Y	Y	Y

Please note that certain figures listed above were approximated for comparison purposes only.  
For specific and complete technical information, REVIT Drawings and drawing details, please visit our website.

<sup>(1)</sup> Finishes must not exceed 1/8" thick (3mm) or weigh more than 0.11 lbs/sq.ft. (0.54 kg./m²)  
<sup>(2)</sup> Please refer to the technical section of our website for available finishes  
<sup>(3)</sup> Available finishes include standard vinyl/fabric or white marker board surface finish  
<sup>(4)</sup> Available in acoustically transparent fabric only





For more information visit our website or contact us directly.

**MAIN OFFICE**

325 Lee Avenue  
Montreal, Quebec  
CANADA H9X 3S3

**U.S. FACILITY**

80 Montana Drive  
Plattsburgh, NY  
U.S.A. 12903

T +1 (514) 457-4767

F +1 (514) 457-7111

info@skyfold.com

[www.skyfold.com](http://www.skyfold.com)

**[www.skyfold.com](http://www.skyfold.com)**