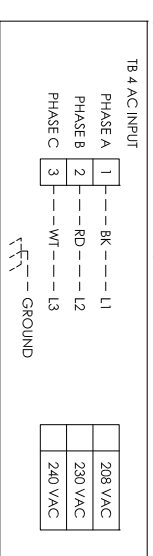
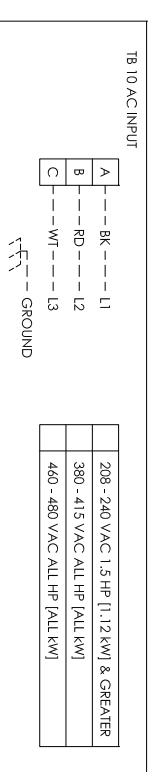


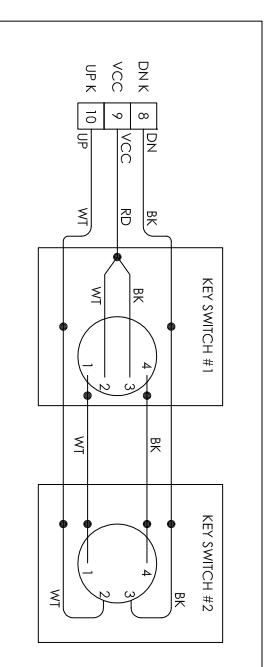
AC POWER INPUT: 208 - 240 VAC 1 HP [0.75 kW] & LESS
(5 AMPS FUSED ISOLATOR)



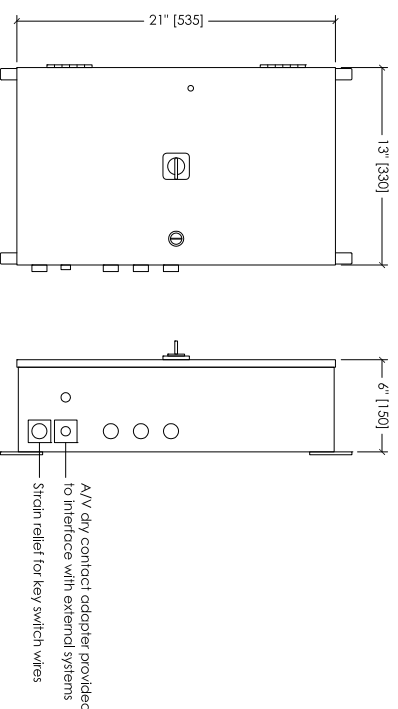
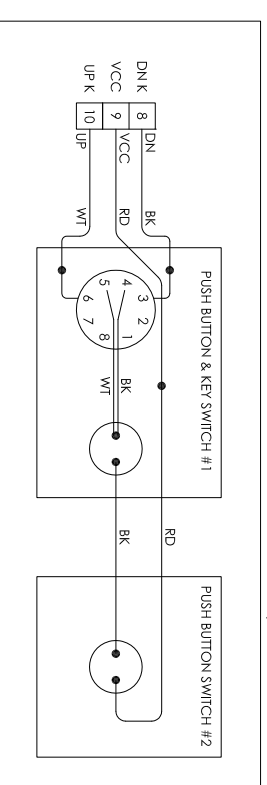
AC POWER INPUT: 208 - 240 VAC 1.5 HP [1.12 kW] & GREATER & GREATER
(1.5 AMPS FUSED ISOLATOR)



WIRING DIAGRAM FOR KEY SWITCHES IN SERIES (SKYFOLD SWITCHES ONLY)



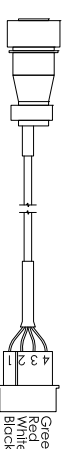
WIRING DIAGRAM FOR PUSH BUTTON & KEY SWITCHES IN SERIES (SKYFOLD SWITCHES ONLY)



CONTROL BOX
SCALE: NONE

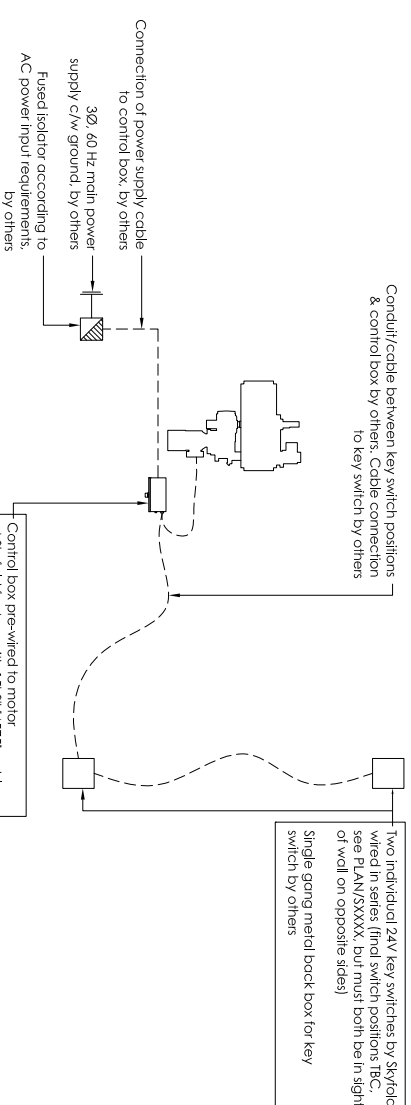
Front view
Side view

A/V dry contact adaptor provided to interface with external systems
Strain relief for key switch wires

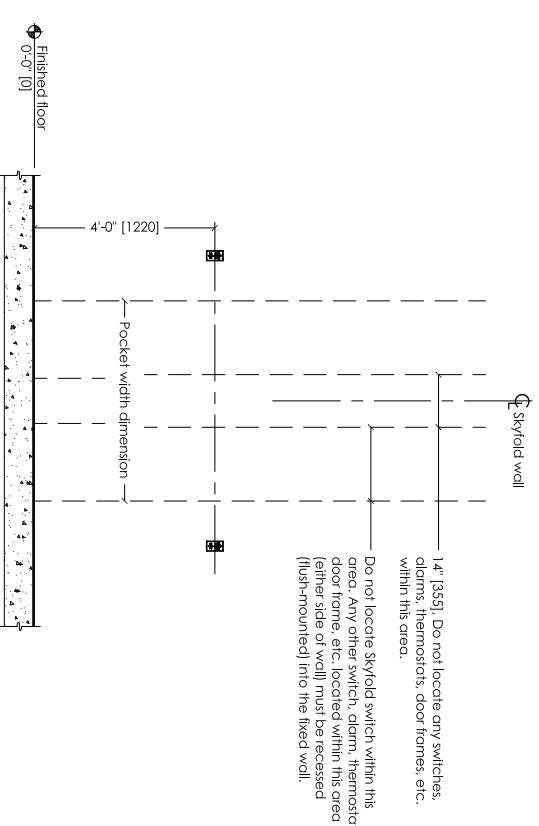


Wall at lower limit, pins 1+2 close
Wall at upper limit, pins 3+4 close

A/V ADAPTER PLUG ASSEMBLY
(SOCKET CONNECTOR INCLUDED)
SCALE: NONE



ELECTRICAL PLAN
SCALE: NONE



ELEVATION SHOWING KEY SWITCHES
SCALE: 1/2" = 1'-0"

NOTES TO G.C.

- Specified electrical: 208 VAC, 3Ø, 60 Hz.
* POWER MUST BE AVAILABLE AT TIME OF INSTALLATION.
- 24 volt key switch controls & boxes to be installed by electrical contractor as per standard light switch. Boxes to be fitted at desired key switch location with suitable cable run back through ceiling void to control box position, including sufficient spare to allow connection. Key switches are supplied by Skyfold & are required on each side of the wall.
- See PLAN/SXXXX for key switch positions.
- Motor size: Varies - project-specific
Full load amp: XXXX A
- Do not scale from this drawing. All dimensions must be verified on site.
- Dimensions in [] are in millimeters (mm) unless noted otherwise.

THE ELECTRICAL CONTROL BOX IS TO BE MOUNTED BY THE ELECTRICAL CONTRACTOR.

THIS DRAWING IS INTENDED AS A GUIDE. IN ALL CASES SKYFOLD SHOP DRAWINGS SPECIFIC TO EACH PROJECT ARE REQUIRED FOR FINAL BUILD-TO-DIMENSIONS.

TYPICAL SKYFOLD WALL

PROJECT: X @ X-X" [XXXX] X X-X" [XXXX] B.O. Pocket Compact drive unit

ELECTRICAL DETAILS

DESIGNED BY: X @ X-X" [XXXX] X X-X" [XXXX] B.O.	CONTRACTOR:
DRAWN BY: []	DATE: []
CHECKED BY: []	APPROVED BY: []
SCALE: AS NOTED	SHEET NO. 3 OF 3
DRAWING TITLE: SXXXX	REVISION: 2