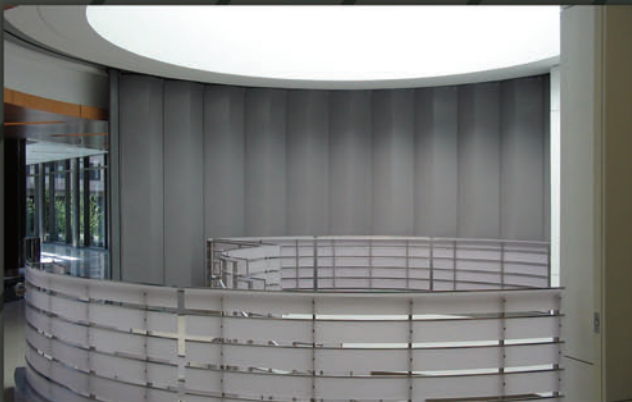




Since 1946

McKeon Door Company

Auto-Set® • Safescape® • ClimateGuard™ • FireFighter™



Creative Solutions • Innovative Designs • Proven Products



Proven Over Time

Founded in 1946, McKeon Door Company is a full line manufacturer of fire-rated and non fire-rated wide span opening protectives. Through the years, McKeon has remained an innovator, developing cutting-edge technology in response to the needs of its customers. Whether driven by new code requirements, a building owner's creativity, or an architect's imagination, McKeon continues to rise to the challenge. The building industry has come to rely on McKeon Door Company for fire and security products that provide quality performance, code compliance and design flexibility. The McKeon team is available to assist you from design through installation; from hand sketches to CAD and BIM we are there to help.



Proven Performance and Code Compliance

All McKeon rated assemblies carry Underwriter's Laboratory (UL), Intertek (ITS) or Factory Mutual (FM) listings for both fire and smoke, confirmed and published under ICC-ESR 2219. Each fire door product enters the market place labeled, and special application assemblies are pre-tested to the highest performance standards in the industry. Vertical, side and horizontal acting door assemblies are tested and listed under current code referenced standards ensuring total acceptance and quality performance.



Proven Distribution

McKeon has assembled a team of the finest manufacturers' representatives in the world with representation in all fifty states, Europe, Asia and the Middle East. Along with their own impressive list of business successes, each representative has been certified sales and installation trained at the McKeon corporate center. When a product leaves the factory and reaches its destination job site, there will be a local experienced McKeon representative to install and service your doors with expertise and care.



Proven Educational Opportunities

McKeon Door Company is a certified AIA Continuing Education Provider. From building code to product awareness we offer learning units in both Health Safety and Welfare as well as Sustainable Design. Starting with this brochure it is as easy as a key stroke to move on to the Architectural Design Manual, CD and internet access to CAD product details, as well as specifications and product demonstration videos. McKeon also offers "Fire Door Systems: A Guide to Code Compliance," an interpretive manual on the building code and opening protectives.



For more information or for an electronic version of this brochure please visit mckeondoor.com



Contents

Vertical Acting Fire Door Systems

Vertical Coiling

- Deployable Egress. 2
- Fixed Egress 4
- Non-egress 6
- Counter Shutters 10

Side Acting Fire Door Systems

Side Sliding

- Fixed Egress 12
- Non-egress 12

Side Coiling

- Fixed Egress 14
- Non-egress 15

Side Folding Accordion

- Fixed Egress 18
- Power-assisted Egress 18
- Non-egress 18

Horizontal Acting Fire Door Systems

- Horizontal Shutter**. 20

Fire & Smoke Rated Curtain Systems

Vertical Coiling

- Draft Curtains 22
- Non-Egress 24
- Fixed Egress 26

Non-Fire Rated Door Systems

- Service Doors** 28
- Security Grilles** 33

Appendix

- Glossary**. 37



Vertical Coiling with Deployable Egress

SAFESCAPE® T2000 Series

A vertical coiling fire and smoke rated door system that incorporates either one or two deployable complying egress swing doors. Flush mounted in an adjacent wall, these complying egress swing doors deploy and lock into position at the command of an alarm condition. Once in place the integral egress doors and frames serve as side guides to accommodate a 3-hour roll-down door assembly that descends at a governed rate. Within seconds a 3-hour opening protective with single or dual egress swing doors stands ready to fight fire and smoke.

Safescape® Model T2000 | Vertical Coiling Fire Door with One Deployable Egress Door



Safescape® Model T2500 | Vertical Coiling Fire Door with Two Deployable Egress Doors

T2000 Series fire door assemblies incorporate either one or two deployable egress doors which are flush mounted in an adjacent wall. Upon activation by a building alarm or in an emergency condition, these complying egress doors swing into position. The doors then serve as side guides for the vertical coiling door assembly as it descends to provide complete protection from fire and smoke, yet allow for egress should it be necessary.



VERTICAL ACTING FIRE DOOR SYSTEMS

Product Features

Ratings

- 3-hour rated UL 10B
- 90-minute rated with 450° F Temperature Rise rating when required
- Smoke & Draft labeled UL 1784

Code Compliance

- ESR 2219
- ADA compliant

Egress

- Available with up to 2 complying egress swing doors

Operation

- Auto-Set® automatic resetting
- Fail-Safe Design - automatic self-closing mechanism does not require power operation

Size

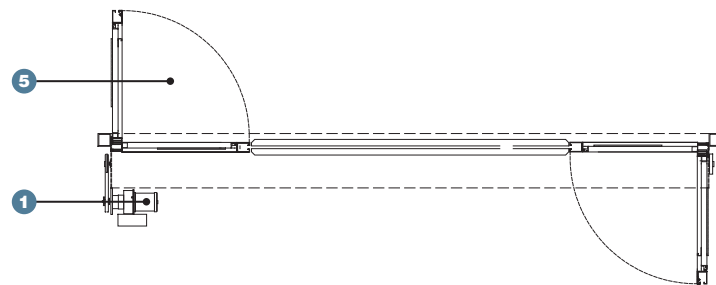
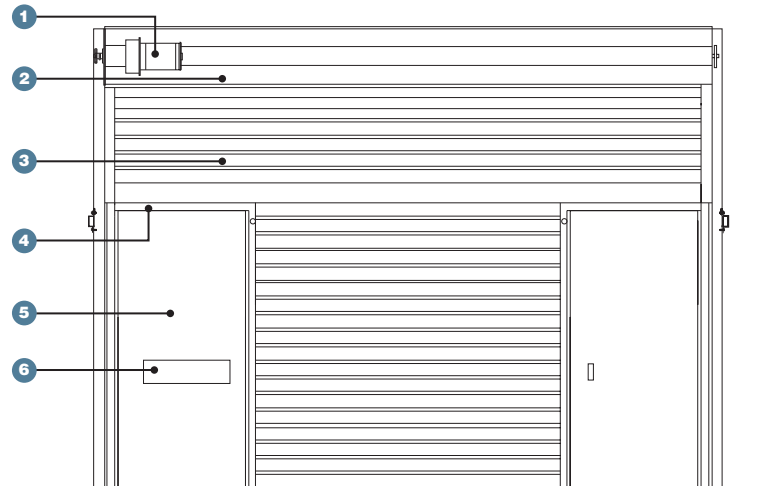
- Unlimited heights and widths to 60'; for larger sizes and custom configurations consult the factory

Finishes

- McKeon sterling gray
- Custom powder coat
- Stainless steel

T2500 with Two Deployable Egress Doors: Main Components

- | | |
|----------------------------|-------------------------|
| ① Fire Door Motor Operator | ④ Door Closer |
| ② Hood | ⑤ Swinging Egress Doors |
| ③ Curtain Slats | ⑥ Fire Exit Hardware |



Note: Egress doors may swing in opposite directions.

MODEL	OPERATION		EGRESS
	Open	Self-Close	
T2000	Auto-Set® Power Operator	Fail-Safe Mechanical	1 Complying Swing Door ¹
T2500	Auto-Set® Power Operator	Fail-Safe Mechanical	2 Complying Swing Doors ¹

¹ Maximum swing door width is 48".

Vertical Coiling with Fixed Egress

SAFESCAPE® T5000 Series

This fire and smoke rated door assembly is designed to coil at the top allowing the rigid bottom frame with fixed egress doors to lower when deployed. Once in place, the single or multiple swinging egress doors provide complying egress. Large occupant loads and wide-span openings are easily accommodated by the McKeon T5000.

Safescape® Model T5006 | Vertical Acting Fire Door with Multiple Fixed Egress Doors



T5000 Series Fire Door Systems are designed to coil at the top allowing the rigid bottom with fixed egress doors to lower when deployed. Once in place, the single or multiple swinging egress doors provide complying egress.

Safescape® Model T5007 | Vertical Acting Fire Door with Multiple Fixed Egress Doors



T5000 Series fire doors are available with as many as 18 conventional fixed egress doors to accommodate large occupant load exit width requirements and facilitate circulation during an emergency – a feature that is especially desirable in a retail environment.

VERTICAL ACTING FIRE DOOR SYSTEMS

Product Features

Ratings

- 3-hour rated UL 10B
- 90-minute rated with 450° F Temperature Rise rating when required
- Smoke & Draft labeled UL 1784

Code Compliance

- ESR 2219
- ADA compliant

Egress

- Available with up to 18 complying egress swing doors

Operation

- Auto-Set® automatic resetting
- Fail-Safe Design - automatic self-closing mechanism does not require power operation

Size

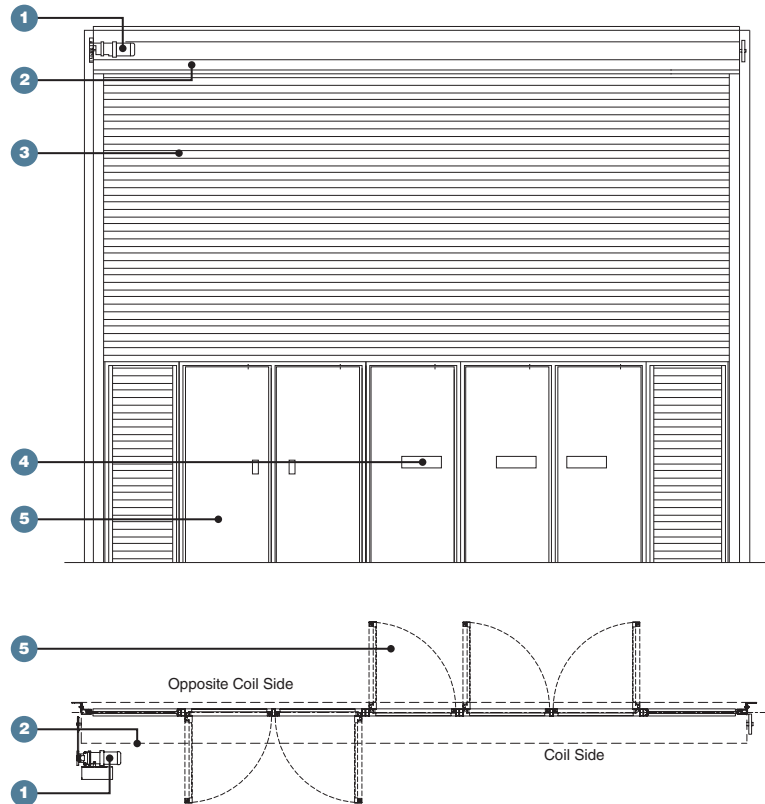
- Unlimited heights and widths to 60'; for larger sizes and custom configurations consult the factory

Finishes

- McKeon sterling gray
- Custom powder coat
- Stainless steel

T5000 with Multiple Fixed Egress Doors: Main Components

- | | |
|----------------------------|-------------------------|
| ① Fire Door Motor Operator | ④ Fire Exit Hardware |
| ② Hood | ⑤ Swinging Egress Doors |
| ③ Curtain Slats | |



Note: Egress doors may swing in opposite directions.

MODEL	OPERATION		EGRESS
	Open	Self-Close	
T5001 ¹	Auto-Set® Power Operator	Fail-Safe Mechanical	1 Complying Swing Door ²
T5002 - T5018 ¹	Auto-Set® Power Operator	Fail-Safe Mechanical	2 to 18 Complying Swing Doors ²

¹ The last two digits of the model number indicate the number of swing doors.

² Maximum swing door width is 48".

Vertical Coiling without Egress

AUTO-SET® Model FSFD

This automatic resetting vertical coiling fire and smoke rated door system self-closes without reliance on electricity or battery back-up. The non-egress Model FSFD is recommended for applications where fire and smoke protection is required but egress is not an issue.

Auto-Set® Model FSFD | Vertical Coiling Fire and Smoke Rated Door without Egress



Model FSFD is the original automatic resetting fire door. These fire doors can be custom designed to almost any width or height, spanning seemingly difficult openings with ease and preserving open plans.



Vertical Coiling without Egress

AUTO-SET® Insulated Model FSFD-IS & Acoustical Model FSFD-STC

The FSFD-IS is designed for interior or exterior applications where fire protection is necessary and climate and temperature control are also critical. Available with an R value up to 8.7, the highest in the industry.

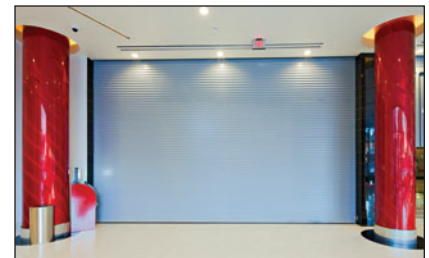
The FSFD-STC acoustical fire door is designed to protect openings that require both fire protection and sound control. Available with up to a 34 STC, the highest in the industry.

Auto-Set® Model FSFD-IS | Vertical Coiling Insulated Fire Door without Egress



Model FSFD-IS insulated fire doors are ideally suited for openings in fire walls that are exposed to the elements or in openings in areas that require climate control as well as fire protection.

Auto-Set® Model FSFD-STC | Vertical Coiling Acoustical Fire Door without Egress



Use the Model FSFD-STC in lieu of providing both a fire door and an acoustical type door in the same opening and avoid duplication in construction.

Vertical Coiling without Egress

AUTO-SET® Model FSFD-TR

The Auto-Set® Model FSFD-TR is designed for use in areas where a Temperature Rise rating in addition to standard fire ratings is required. With a rating of 450° F it meets building code requirements for fire doors used in exit enclosures and exit passageways of non-sprinklered buildings.

Auto-Set® Model FSFD-TR | Vertical Coiling Temperature Rise Rated Fire Door without Egress



Model FSFD-TR is designed for openings where a temperature rise rated opening protective is required.



Openings in rated walls requiring temperature rise ratings are no longer limited to standard swing door dimensions when protected by the Model FSFD-TR, meaning greater design flexibility.

VERTICAL ACTING FIRE DOOR SYSTEMS

Product Features

Ratings

- Up to 4-hour rated UL 10B
- 90-minute rated with 450° F Temperature Rise rating when required
- Smoke & Draft labeled UL 1784
- Available with an STC up to 34
- Thermal protection with an R value up to 8.7

Code Compliance

- ESR 2219

Egress

- Not applicable

Operation

- Auto-Set® automatic resetting
- Fail-Safe Design - automatic self-closing mechanism does not require power operation
- Based upon door size, available with hand-chain or hand-crank operation

Size

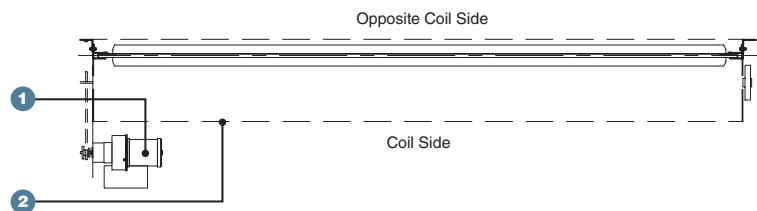
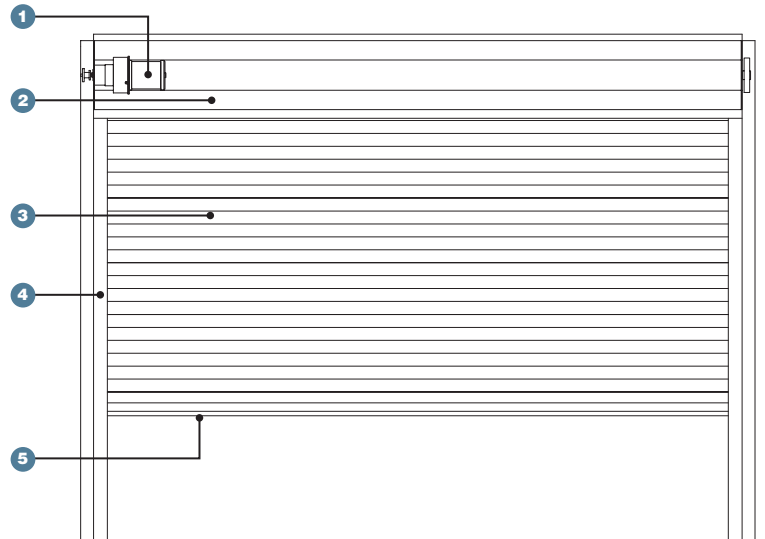
- Unlimited heights and widths to 80'; for larger sizes and custom configurations consult the factory

Finishes

- McKeon sterling gray
- Custom powder coat
- Stainless steel

Models FSFD, FSFD-IS, FSFD-STC & FSFD-TR: Main Components

- | | |
|----------------------------|--------------|
| ① Fire Door Motor Operator | ④ Guides |
| ② Hood | ⑤ Bottom Bar |
| ③ Curtain Slats | |



MODEL	OPERATION		EGRESS	FUNCTION
	Open	Self-Close		
FSFD	Auto-Set® Power Operator	Fail-Safe Mechanical	N/A	Fire Door
FSFD-IS	Auto-Set® Power Operator	Fail-Safe Mechanical	N/A	Insulated Fire Door
FSFD-STC	Auto-Set® Power Operator	Fail-Safe Mechanical	N/A	Sound Rated Fire Door
FSFD-TR	Auto-Set® Power Operator	Fail-Safe Mechanical	N/A	Temperature Rise Fire Door

Under US Patents: 5,386,891 - 5,605,185 - 5,673,514 - 5,893,234

Vertical Coiling Counter Shutters

AUTO-SET® CFS Series

The automatic resetting Auto-Set® Counter Fire and Smoke Rated Model CFS shutter can be designed to accommodate almost any opening variation up to 28 feet in width and 12 feet in height for both interior and exterior applications. Unlike conventional counter shutters the Auto-Set® Model CFS is easily tested and reset by onsite building personnel.

Auto-Set® Model CFS | Vertical Coiling Fire Rated Counter Shutters



Auto-Set® Model CFS fire shutters can be designed to accommodate almost any opening variation. They are available in a variety of colors and finishes including McKeon sterling gray, powder coat or stainless steel and can be manually, hand crank or motor operated.



VERTICAL ACTING FIRE DOOR SYSTEMS

Product Features

Ratings

- Up to 3-hour rated UL 10B
- Smoke & Draft labeled UL 1784

Code Compliance

- Not applicable

Egress

- Not applicable

Operation

- Auto-Set® automatic resetting
- Fail-Safe Design - automatic self-closing mechanism does not require power operation

Size

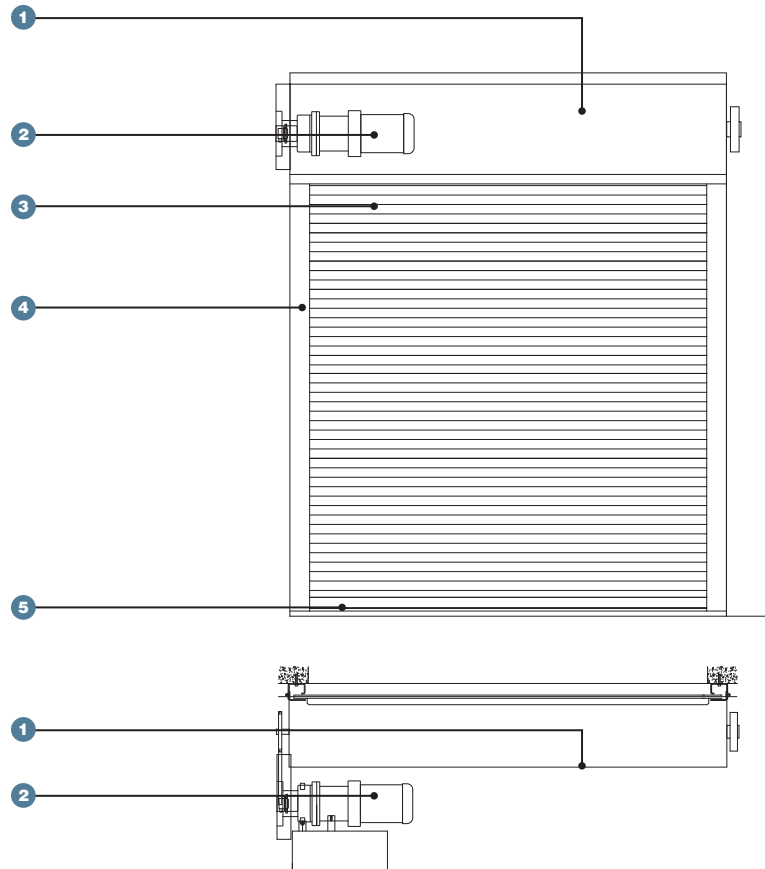
- Widths to 28' and heights to 12'; for larger sizes and custom configurations consult the factory

Finishes

- McKeon sterling gray
- Custom powder coat
- Stainless steel

Model CFS: Main Components

- | | |
|----------------------------|--------------|
| ① Hood | ④ Guides |
| ② Fire Door Motor Operator | ⑤ Bottom Bar |
| ③ Curtain Slats | |



MODEL	OPERATION		EGRESS	FUNCTION
	Open	Close		
CFS-M	Auto-Set® Power Operator	Fail-Safe Mechanical	N/A	Motor Operated Fire Shutter
CFS-HK	Hand-crank	Fail-Safe Mechanical	N/A	Hand-crank Operated Fire Shutter
CFS-PP	Manual Push-up	Mechanical	N/A	Manually Operated Fire Shutter

Under US Patents: 5,386,891 - 5,605,185 - 5,673,514 - 5,893,234

Side Sliding with & without Egress

SAFESCAPE® S7000 Series

The Safescape® S7000 Series fire door systems are available in both manual or motor operated designs and with or without swing type egress doors. S7000 Series doors are side acting therefore ideal for openings in fire walls where headroom is limited. The side activated design enables these fire doors to navigate around tight curves and contoured openings.

Safescape® Model S7900 | Side Sliding Fire Door with Multiple Fixed Egress Doors



With its state-of-the-art side acting technology the S7004 easily incorporates four fixed egress doors eliminating the need for conventional swing doors.

Model S7600 | Side Sliding Fire Door without Egress



S7600 fire doors require minimal headroom. When in the stored fire-ready position the entire assembly retracts into a side pocket parallel to the rated corridor that is approximately 4" wide and equal to the length of the door assembly.

SIDE ACTING FIRE DOOR SYSTEMS

Product Features

Ratings

- 3-hour rated UL 10B
- Smoke & Draft labeled UL 1784

Code Compliance

- ESR 2219
- ADA compliant

Egress

- Fixed complying swing doors when required

Operation

- Auto-Set® automatic resetting
- Fail-Safe Design - automatic self-closing mechanism does not require power operation
- Manual operation for assemblies up to 10'x10' in size

Size

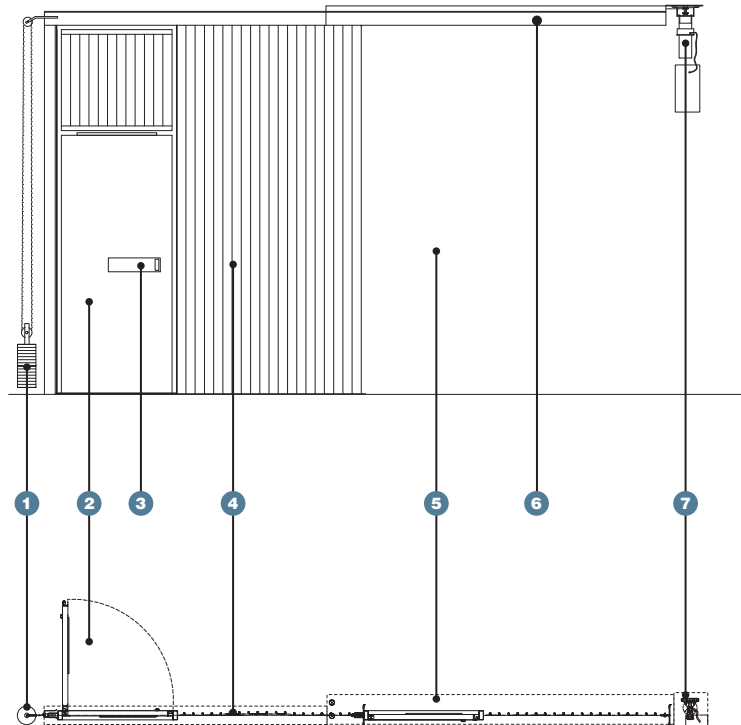
- Widths to 80' and heights to 24'; for larger sizes and custom configurations consult the factory
- Negotiates radius curves: 5'-0" with egress doors; 1'-0" without egress doors

Finishes

- McKeon sterling gray
- Custom powder coat
- Stainless steel

S7000 with Fixed Egress: Main Components

- | | |
|------------------------|----------------------------|
| ① Counterbalance | ⑤ Fire Rated Pocket |
| ② Swinging Egress Door | ⑥ Head Track |
| ③ Fire Exit Hardware | ⑦ Fire Door Motor Operator |
| ④ Curtain Slats | |



Note: Egress doors may swing in opposite directions.

MODEL	OPERATION		EGRESS	FUNCTION
	Open	Self-Close		
S7200	Manual Push-open	Fail-Safe Mechanical	N/A	Side Sliding
S7400	Manual Push-open	Fail-Safe Mechanical	1 Complying Swing Door ²	Side Sliding
S7500	Manual Push-open	Fail-Safe Mechanical	2 Complying Swing Doors ²	Side Sliding
S7600	Auto-Set® Power Operator	Fail-Safe Mechanical	N/A	Side Sliding
S7700	Auto-Set® Power Operator	Fail-Safe Mechanical	1 Complying Swing Door ²	Side Sliding
S7901-S7918¹	Auto-Set® Power Operator	Fail-Safe Mechanical	Multiple Complying Swing Doors ²	Side Sliding

¹ The last two digits of the model number indicate the number of swing doors. ² Maximum swing door width is 48".

Side Coiling with Fixed Egress

SAFESCAPE® S9000 Series

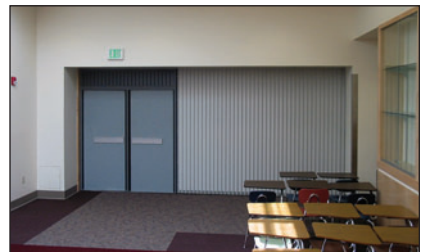
The Safescape® S9000 Series fire door system is a side coiling fire and smoke rated door with one or multiple integral swing type egress doors, a complying method of egress. The side coiling design makes this product ideal for openings in rated walls where headroom clearance is limited and enables the assembly to navigate around tight curves and contoured openings.

Safescape® Model S9000 | Side Acting Fire Door with One Fixed Egress Door



The Safescape® S9000 fire door retracts into a side pocket and is virtually undetectable when in the stored, fire-ready position.

Safescape® Model S9500 | Side Acting Fire Door with Multiple Fixed Egress Doors



When the Safescape® S9500 fire door assembly is in the activated or fully closed position, egress is still possible through complying egress doors located at the leading edge.

Side Coiling without Egress

AUTO-SET® S4000 Series

The automatic resetting S4000 is a side coiling fire and smoke rated door. The S4000's side activated design makes this product ideal for openings in rated walls where headroom is limited and enables the door to navigate around tight curves and contoured openings.

Auto-Set® Model S4000 | Side Coiling Fire Door without Egress



Side coiling S4000 fire door systems may be used to protect openings in rated walls where headroom clearance is limited.

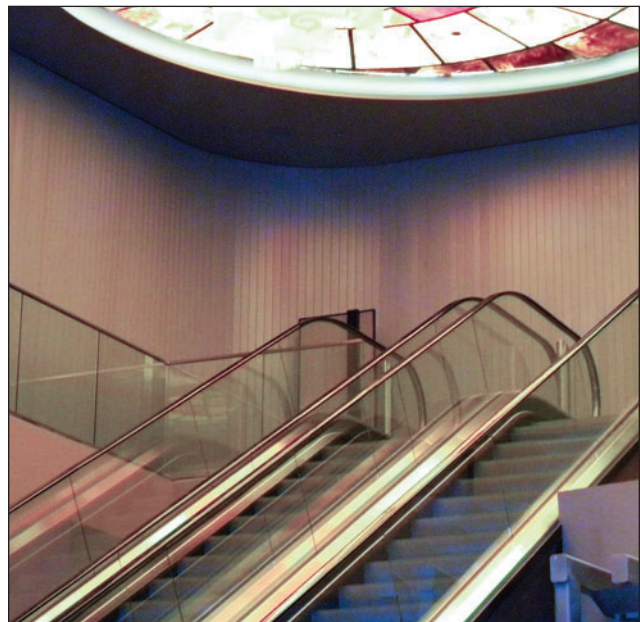


SIDE ACTING FIRE DOOR SYSTEMS

Auto-Set® Model S4000 | Side Coiling Fire Door without Egress



S4000 fire door systems do not require a floor track and are capable of navigating around tight curves and contoured openings. This triple curve, 140-foot bi-parting door assembly can easily accommodate wide-span openings, providing the required escalator shaft protection.



SIDE ACTING FIRE DOOR SYSTEMS

Product Features

Ratings

- 3-hour rated UL 10B
- Smoke & Draft labeled UL 1784

Code Compliance

- ESR 2219
- ADA compliant

Egress

- Single or multiple fixed complying egress doors available in the S9000 series when required
- Not applicable in the S4000 series

Operation

- Auto-Set® automatic resetting
- Fail-Safe Design - automatic self-closing mechanism does not require power operation

Size

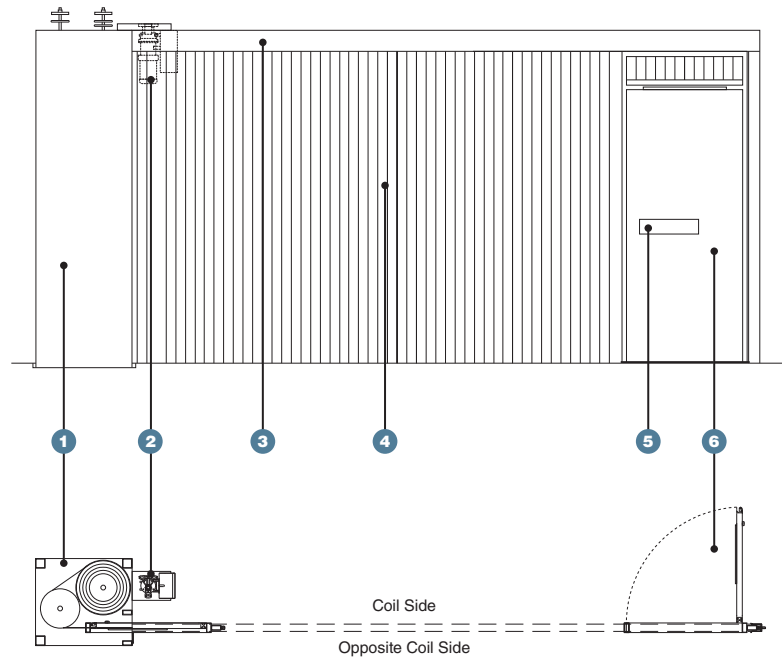
- Widths to 80' and heights to 24'; for larger sizes and custom configurations consult the factory
- Negotiates radius curves: 5'-0" with egress doors; 1'-0" without egress

Finishes

- McKeon sterling gray
- Custom powder coat
- Stainless steel

S9000 with Fixed Egress: Main Components

- | | |
|----------------------------|-------------------------|
| ① Coil Box | ④ Curtain Slats |
| ② Fire Door Motor Operator | ⑤ Fire Exit Hardware |
| ③ Head Track | ⑥ Swinging Egress Doors |



Note: Egress doors may swing in opposite directions.

MODEL	OPERATION		EGRESS	FUNCTION
	Open	Close		
S9000	Auto-Set® Power Operator	Fail-Safe Mechanical	1 Complying Swing Door	Side Coiling
S9500	Auto-Set® Power Operator	Fail-Safe Mechanical	Multiple Complying Swing Doors	Side Coiling
S4000	Auto-Set® Power Operator	Fail-Safe Mechanical	N/A	Side Coiling

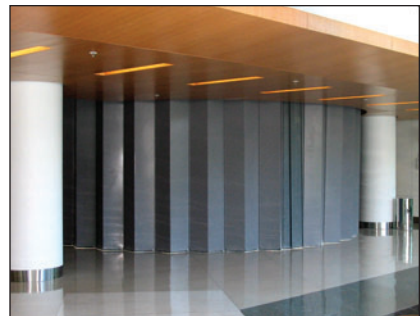
Under US Patents: 5,355,927 - 5,386,891 - 5,542,460 - 5,605,185 - 5,673,514 - 5,893,234

Side Folding Accordion

SAFESCAPE® AC8000 Series

The Safescape® AC8000 Series Fire Door Systems are available in either manual or motor operated designs and can be provided with or without swinging egress doors. The units are made up of either 7-inch or 14-inch panels requiring a 9-inch or a 15 1/2-inch pocket profile, respectively.

Safescape® Model AC8600 | Side Acting Accordion Fire Door without Egress



Side acting AC8000 accordion fire doors are installed without a floor track, can accommodate radius curves and can be designed as single or bi-parting systems.

Safescape® Model AC8400 | Side Acting Accordion Fire Door with One Integral Egress Door



The Safescape® Model AC8400 is designed to be manually operated and incorporates one complying egress door.

SIDE ACTING FIRE DOOR SYSTEMS

Product Features

Ratings

- 3-hour rated UL 10B
- Smoke & Draft labeled UL 1784

Code Compliance

- ESR 2219
- ADA compliant

Egress

- Fixed complying swing doors
- Power assisted exit device (AC8800 only)

Operation

- Auto-Set® automatic resetting
- Fail-Safe Design - automatic self-closing mechanism does not require power operation
- AC8800 is A/C or D/C power operated

Size

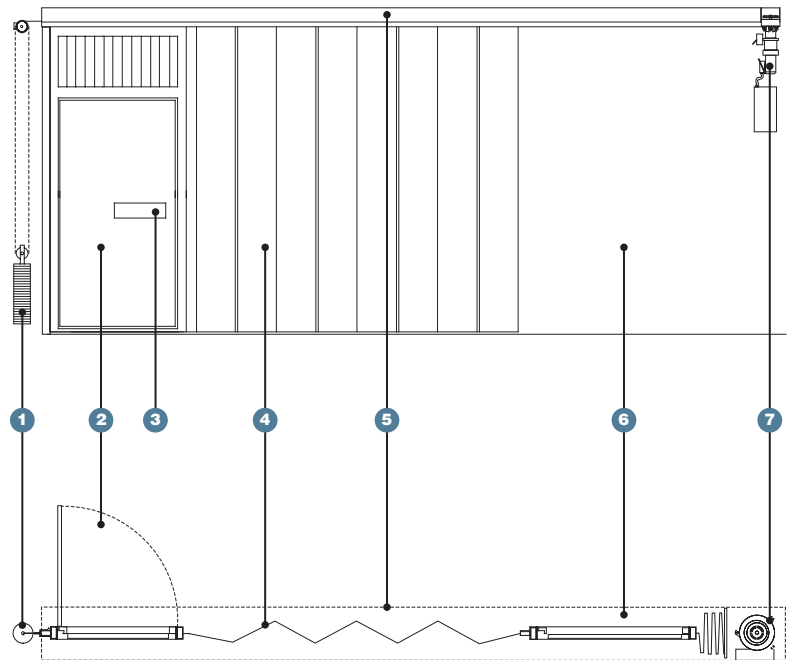
- Widths to 80' and heights to 24'; for larger sizes and custom configurations consult the factory
- Negotiate radius curves: 1'-6" without egress; 5'-0" with egress

Finishes

- McKeon sterling gray
- Custom powder coat
- Stainless steel

AC8700 with Integral Egress: Main Components

- | | |
|---|----------------------------|
| ① Counterbalance (not applicable on the AC8800) | ④ Accordion Panels |
| ② Swinging Egress Door | ⑤ Head Track |
| ③ Fire Exit Hardware | ⑥ Stack Pocket |
| | ⑦ Fire Door Motor Operator |



MODEL	OPERATION		EGRESS	FUNCTION
	Open	Close		
AC8200	Manual Push-open	Fail-Safe Mechanical	N/A	Accordion Stacking
AC8400	Manual Push-open	Fail-Safe Mechanical	1 Complying Swing Door	Accordion Stacking
AC8500	Manual Push-open	Fail-Safe Mechanical	2 Complying Swing Doors	Accordion Stacking
AC8600	Auto-Set® Power Operator	Fail-Safe Mechanical	N/A	Accordion Stacking
AC8700	Auto-Set® Power Operator	Fail-Safe Mechanical	1 Complying Swing Door	Accordion Stacking
AC8800	Auto-Set® Power Operator	Power Assisted	Power Assisted (Complying Dual Egress)	Accordion Stacking
AC8900	Auto-Set® Power Operator	Fail-Safe Mechanical	Multiple Doors	Accordion Stacking

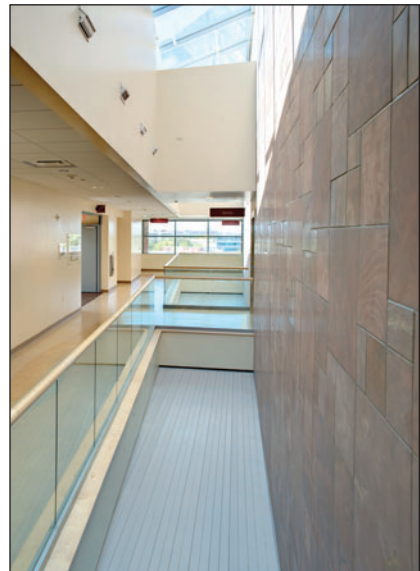
Under US Patents: 5,386,891 - 5,605,185 - 5,673,514 - 5,893,234 - 6,615,894

Horizontal Shutters

H200 Series

H200 Series horizontal shutters prevent the migration of heat, smoke or hot/toxic gases by creating vertical compartments thereby separating the vertical spaces from one another. Horizontal shutters reduce construction costs. Smoke evacuation systems can become unnecessary and one horizontal fire shutter can be used in lieu of numerous conventional fire barriers on multiple floors.

Model H200 | Horizontal Shutter



The Model H200 horizontal shutter is used to convert this atrium to a vertical compartment separation, lowering costs by eliminating smoke evacuation systems.



The handrail riser configuration of a non-egress stair easily hosts the 2-hour shutter without compromise to the design.



HORIZONTAL ACTING FIRE DOOR SYSTEMS

Product Features

Ratings

- 2-hour rated UL 10B
- Smoke & Draft labeled UL 1784

Code Compliance

- ESR (pending)

Operation

- Auto-Set® automatic resetting
- Fail-Safe Design - automatic self-closing mechanism does not require power operation

Function

- Interior and exterior applications
- Coiling on the horizontal plane

Size

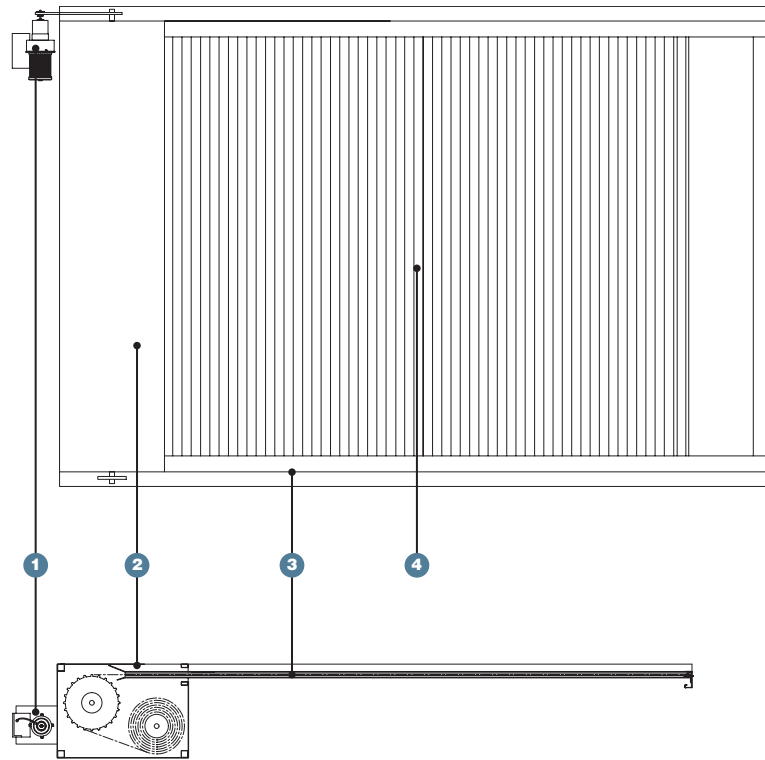
- Widths to 32' and lengths to 110'; for larger sizes and custom configurations consult factory

Finishes

- McKeon sterling gray
- Custom powder coat
- Stainless steel

H200: Main Components

- ① Fire Door Motor Operator
- ② Coil Box
- ③ Shutter Track
- ④ Curtain Slats



MODEL	OPERATION		EGRESS	FUNCTION
	Open	Close		
H200	Auto-Set® Power Operator	Fail-Safe Mechanical	N/A	Coiling on the Horizontal Plane
HL250 (Curved)	Auto-Set® Power Operator	Fail-Safe Mechanical	N/A	Coiling on the Horizontal Plane

Under US Patents: 5,355,927 - 5,386,891 - 5,542,460 - 5,605,185 - 5,673,514 - 5,893,234

Vertical Coiling Deployable Draft Curtain

FIREFIGHTER™ Model D100

The McKeon FireFighter D100 is manufactured from fabric that has been tested and certified under UL 10D and UL 1784; and approved to span unlimited widths and heights up to 24 feet. The test criteria included side guides, however, the test parameters for draft curtains do not require any of the above certifications except to resist the passage of smoke. Thus, the McKeon D100 exceeds the fire and life safety requirements for draft curtains in the building code.



The FireFighter D100 is rated to stop both fire and smoke and will deploy only upon alarm or emergency condition leaving the space free of any fixed materials during normal conditions.



FIRE & SMOKE RATED CURTAIN SYSTEMS

Product Features

Fire & Smoke Ratings

- Approved materials in compliance w/IBC Section 910.3.5.1

Code Compliance

- ESR (pending)

Egress

- Not required

Operation

- Auto-Set® automatic resetting
- Fail-Safe Design - automatic self-closing mechanism does not require power operation

Size

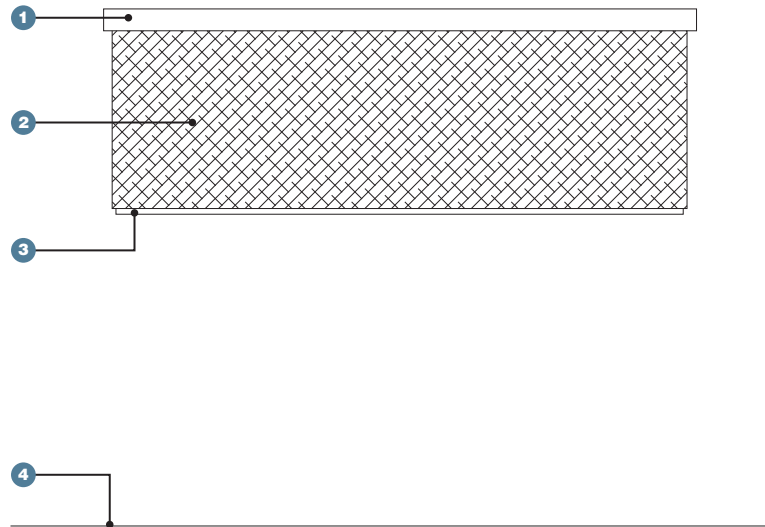
- Unlimited widths and heights to 24'

Finishes

- Overhead hood and bottom bar only – standard powder coat white, custom colors available

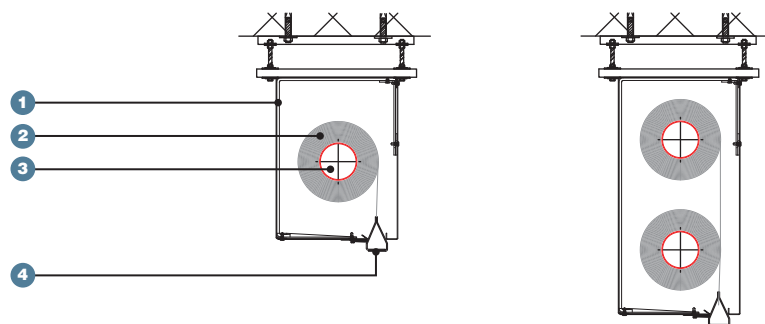
D100: Main Components

- | | |
|----------------------------|----------------|
| ① Hood Assembly | ③ Bottom Bar |
| ② Deployable Draft Curtain | ④ Finish Floor |



Hood Assembly

- | |
|----------------------------|
| ① Hood Enclosure |
| ② Deployable Draft Curtain |
| ③ Barrel Assembly |
| ④ Bottom Bar |



Single Barrel
Width - up to 16'
Height - up to 24'

Multiple Barrel
Width - Unlimited
Height - up to 24'

MODEL	OPERATION		EGRESS
	Open	Close	
D100	Auto-Set® Power Operator	Fail-Safe Mechanical	N/A

Vertical Coiling Opening Protective w/out Egress

FIREFIGHTER™ Model D200

McKeon Door Company introduces an opening protective made of a flexible fire-rated fabric that is US laboratory tested and approved. A first in the industry, the FireFighter D200 carries a UL 10D 3-hour rating and is UL 1784 smoke and draft rated. The D200 is approved for use in many applications spanning unlimited widths.



Rolling counter fire shutters have been redefined! Simple to install, easy to use and cost effective low-profile solutions are simple with flexible fire and smoke rated curtains.

FIRE & SMOKE RATED CURTAIN SYSTEMS

Product Features

Fire & Smoke Ratings

- 3-hour rated UL 10D
- Smoke & Draft labeled UL 1784

Code Compliance

- ESR (pending)

Egress

- Not available

Operation

- Auto-Set® automatic resetting
- Fail-Safe Design - automatic self-closing mechanism does not require power operation

Size

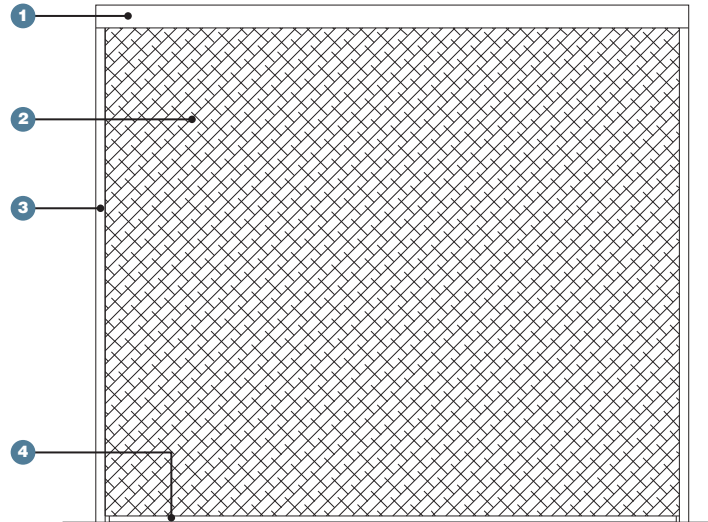
- Unlimited widths and heights to 24'

Finishes

- Side guides, overhead hood and bottom bar only – standard powder coat white, custom colors available

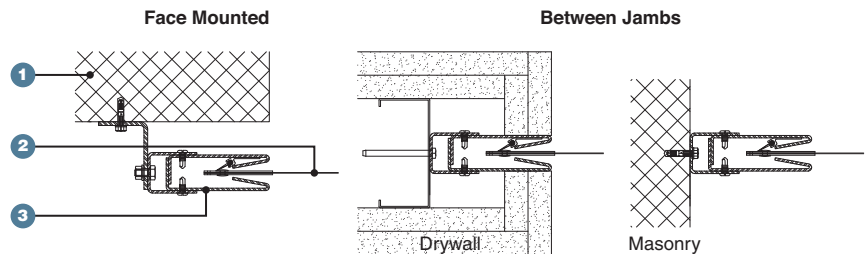
D200: Main Components

- | | |
|------------------------------|------------------|
| ① Hood Assembly | ③ Guide Assembly |
| ② Fire & Smoke Rated Curtain | ④ Bottom Bar |



Guide Assembly

- ① Fire Rated Wall
- ② Fire & Smoke Rated Curtain
- ③ Side Guide



MODEL	OPERATION		EGRESS
	Open	Close	
D200	Auto-Set® Power Operator	Fail-Safe Mechanical	N/A

Vertical Coiling Opening Protective w/Egress

FIREFIGHTER™ D200E Series

McKeon Door Company introduces an opening protective made of a flexible fire-rated fabric that is US laboratory tested and approved. The FireFighter D200E Series is the only fire-rated fabric curtain on the market with a 90-minute UL 10D rating, UL 1784 smoke rated and soft-surface egress door. “The First Responder” is truly a first – going beyond where others leave off!



The means of egress in the D200E complies with the provisions of the ADA.



The FireFighter D200E is a single assembly with either a single egress door, as shown at left, or with multiple egress doors, shown below. With a maximum width of 60 feet and up to 8 egress doors, almost any bank of elevators can be protected with a single assembly. Whether protecting one elevator or many, each model D200E is fixed in vertical high pressure side guides that are easily hidden by side mounting and disappears into narrow overhead slits that conceal the narrow bottom bar. No more unsightly magnet-friendly railings extending to large canister covers in the ceiling.



This photograph depicts an application where a single FireFighter Model D200E can protect a bank of multiple elevators.

FIRE & SMOKE RATED CURTAIN SYSTEMS

Product Features

Fire & Smoke Ratings

- 90-minute rated UL 10D
- Smoke & Draft labeled UL 1784

Code Compliance

- ESR (pending)
- ADA compliant

Egress

- Available with up to 8 complying egress doors

Operation

- Auto-Set® automatic resetting
- Fail-Safe Design - automatic self-closing mechanism does not require power operation

Size

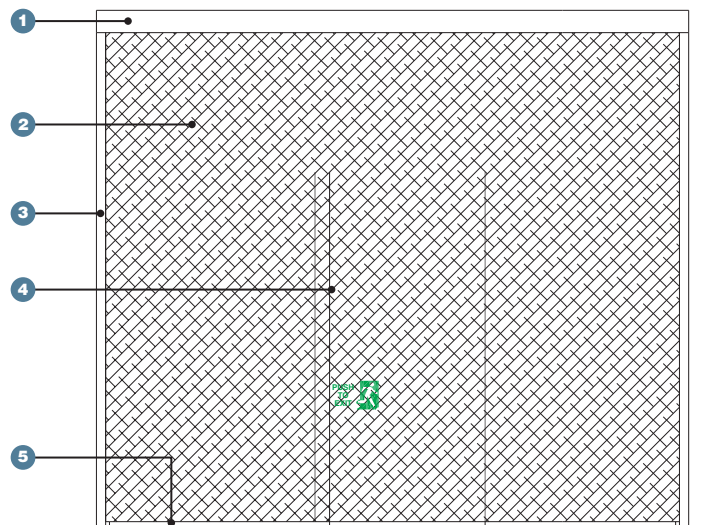
- Widths to 60' and heights to 24'

Finishes

- Side guides, overhead hood and bottom bar only – standard powder coat white, custom colors available

D200E: Main Components

- | | |
|------------------------------|---|
| ① Hood Assembly | ④ One or Multiple Soft Surface Egress Door(s) |
| ② Fire & Smoke Rated Curtain | ⑤ Bottom Bar |
| ③ Guide Assembly | |



MODEL	OPERATION		EGRESS
	Open	Self-Close	
D201E	Auto-Set® Power Operator	Fail-Safe Mechanical	1 Swing Door
D202E - D208E*	Auto-Set® Power Operator	Fail-Safe Mechanical	2 to 8 Swing Doors

* The last digit of the model number indicates the number of swing doors.

This product has patents pending.

Vertical Coiling Service Doors

SD3000 Series, CS3000 Series & H3000 Series

McKeon Door Company offers a wide selection of non-fire rated custom service doors. These assemblies can be manufactured in literally any size or for any function including insulated and sound rated, with either flat solid or perforated slats. All of these slat configurations are available in 16, 18, 20 or 22 gauge. Finishes include McKeon sterling gray, custom powder coat, stainless steel, anodized or powder-coat aluminum, galvanized or baked enamel coated steel. Service doors can be oriented to any custom-fit scenario – vertical coiling, side acting, side coiling or horizontal coiling.



Heavy duty use, exposure to exterior conditions and reliable operation are features of these McKeon service doors.



These two applications represent custom versions of the SD3000 Series service doors. From slats to custom round perforations to non-level threshold applications McKeon Door Company will meet your needs.

NON-FIRE RATED DOOR SYSTEMS

CS3000 Series | Vertical Coiling Service Counter Shutter



CS3000 vertical coiling counter shutters provide convenience and security in one easy manual or motor operated assembly. They are available in a variety of colors and component finishes.

H3000 Series | Vertical Coiling Hurricane Service Door



Model H3014 hurricane service doors are designed to protect the largest of openings without limiting daily business operations. Constructed of 14, 16 or 18 gauge they are capable of sustaining high wind loads including heavy impact from flying debris associated with extreme weather conditions.

Vertical Coiling Insulated Service Doors

CLIMATEGUARD™ IS3000 Series



ClimateGuard IS3000 Series insulated service doors are designed for both interior and exterior use where protection against the transfer of temperature is critical for energy conservation and protection against the elements. They require a minimum amount of head room and side room and are available in a variety of finishes. Where necessary these doors can be designed as self-opening assemblies to allow egress.



ClimateGuard IS3000 Series doors are ideal for heavy traffic and high cycle applications and can be designed to sustain extreme wind loads. When climate control is necessary, ClimateGuard guarantees the highest thermal protection in the industry.

Side Coiling Service Doors & Grilles

SC3000 Series



Model SC3000G. Another custom McKeon grille pattern incorporated into a curved security application where frequent use and aesthetics are paramount.



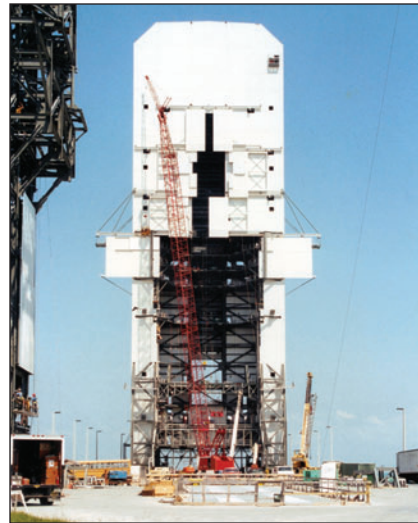
Model SC3000PF. Interior radii, with a variety of custom finishes on perforated slats enhance high profile spaces.



Model SC3000G. Hi-profile custom curtain patterns, double radius curves and bi-parting configuration come together to provide security in the off hours with a touch of subtle marketing appeal in the closed position. Ease of operation and convenient pocket storage allow total access during business hours.

Horizontal Acting Service Doors

HS100 Series



Technologically advanced H100 horizontal service doors from McKeon Door Company divide the interior of NASA's Vertical Assembly building into secure compartmentalized space and provide protection from intrusion, weather and the environment. Custom designed for each application.

MODEL	OPEN/CLOSE	FUNCTION
SD3000	Power or Manual* Operator	Vertical coiling service door – high cycle, heavy use; available in solid or perforated slat
CS3000	Power or Manual* Operator	Vertical coiling service counter shutter
H3000	Power Operator	Vertical coiling service door – high cycle, heavy use, extreme openings, harsh environments
IS3000	Power or Manual* Operator	Vertical coiling service door – high cycle, heavy use, insulated for sound & temperature abatement – self-opening available
SC3000	Power Operator	Side coiling service door – available in solid or perforated slat or a variety of grille patterns
HS100	Power Operator	Horizontal coiling service door
HSL150	Power Operator	Horizontal coiling service door with curve

*Manual operation is limited in size, consult factory.

Vertical Coiling Self-Opening Doors & Grilles

SAFESCAPE® G1000 Series & PF1000

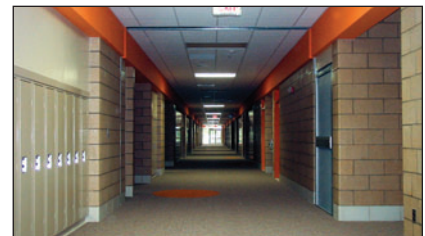
McKeon Door grille assemblies are custom-designed to meet your specific needs. There are more than six curtain patterns and anodized finishes to choose from, either vertical or side coiling. The self-opening models are designed to provide exiting when security is desired in the path of the means of egress. Using fail-safe mechanical technology a self-opening grille will provide adequate egress in the path of exit every time.

Safescape® Model G1000 | Vertical Coiling Self-Opening Security Grille



In the event of an emergency, power failure, activation of a facility's fire alarm system or smoke detection system, Models G1000 and G1500 self-opening security grilles ascend to the open position. In a non-emergency mode, these units provide security.

Safescape® Model G1500 | Vertical Coiling Self-Opening Security Grille w/Deployable Egress Door



The self-opening Model G1500 grille in the fully closed position allows for two means of egress. In alarm condition, the grille rises to the open position leaving the swing door fixed in place and the path of egress open. For convenience, the complying egress swing door can be used in lieu of raising the overhead coiling assembly. To allow higher occupant loads to access the opening without activating the grille, dual complying egress swing doors are available.

NON-FIRE RATED DOOR SYSTEMS

Safescape® Model G1000 | Vertical Coiling Self-Opening Security Grille



Regardless of the occupant load or occupancy use, egress requirements are easily satisfied with self-opening grilles that can accommodate virtually any design regardless of size or configuration.

Safescape® Model PF1000 | Vertical Coiling Self-Opening Security Grille



The PF1000 functions in a path of egress as a self-opening door. This unique assembly is constructed of roll-formed perforated slats that can be individually replaced in the field if damaged. It offers discreet visibility, tighter security and small children cannot climb it reducing liability and damage.

Side Coiling Self-Opening Grilles

SAFESCAPE® G4000 Series

Safescape® Model G4000 | Side Coiling Self-Opening Security Grille



The Model G4000 provides a safe, efficient and economical means of solving both safety and security issues with one product. In the event of a fire, the grille will automatically retract to allow for egress.



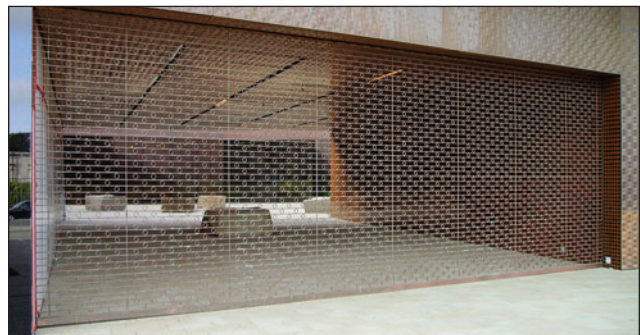
Safescape® Model G4500 | Side Coiling Self-Opening Security Grille w/Integral Egress Door



The self-opening Model G4500 grille, in the fully closed position, allows for two means of egress. First, in alarm condition, the grille slides to the open position, providing a path of egress. Second, for convenience, the complying egress swing door can be used as a locked swing door in lieu of activating the side coiling assembly. To allow higher occupant loads to access the opening without activating the grille, dual complying egress swing doors are available.

Vertical Coiling Security Grilles

G3000 Series



Engineered for daily operation in an exterior application, designed to high-profile custom appearance specifications, and constructed of solid brass components the security grille shown above is one of a kind.

MODEL	OPEN/CLOSE	EGRESS	FUNCTION
G1000	Power Operator	Fail-Safe mechanical open	Vertical coiling, self-opening security grille
G1500	Power Operator	Fail-Safe mechanical open and swing doors	Vertical coiling, self-opening security grille with deployable egress swing doors
PF1000	Power Operator	Fail-Safe mechanical open	Vertical coiling, self-opening security door
G4000	Power Operator	Fail-Safe mechanical open	Side coiling, self-opening security grille
G4500	Power Operator	Fail-Safe mechanical open and/or swing doors	Side coiling, self-opening security grille with fixed egress swing doors
G3000	Power or Manual* Operator	N/A	Vertical coiling security grille

*Manual operation is limited in size, consult factory.

Under US Patents: 5,386,891 - 5,542,460 - 5,605,185 - 5,673,514 - 5,893,234

Glossary

ADA Americans with Disabilities Act. Buildings must be accessible and functional for the disabled. Building product manufacturers must comply with these standards. All McKeon egress doors meet the current ADA standards for egress.

Auto-Set® Power Operator A patented automatic resetting closing and opening system manufactured by McKeon Door Company. This system is standard on all applicable McKeon opening protectives and can be retrofitted to almost all existing manufacturers' applicable products.

ClimateGuard™ Assemblies manufactured by McKeon Door Company that are insulated to control the transmission of temperature and provide acoustical benefits.

Deployable Egress A single or double swing door mounted in a frame that is magnetically held open until released by building loss of power or alarm condition. When released, door and frame swing and lock into position. The door frame acts as a side guide to receive a "T" or "L" shaped rolling steel door forming a complete assembly with egress capability. Available only in Models T2000, T2500 and security grilles.

ESR Evaluation Research Report There are two groups within the United States offering a test and evaluation service – ICC-ES, International Code Council Evaluation Service and IAPMO-ES, International Association of Plumbing and Mechanical Officials Evaluation Service. Both of these agencies evaluate and test manufacturers' products to ensure compliance with the intent of the building code. The McKeon product line has been assigned a compliance number by ICC-ES: ESR 2219.

FireFighter™ Fabric fire and smoke rated curtains manufactured by McKeon Door Company designed to stop the spread of fire and smoke as fire-rated door assemblies, smoke barriers and draft curtains.

Fixed Egress A feature of various fire door assemblies and security grilles. Single or multiple swing doors and frames fixed a) within the rigid framework of the bottom portion of a vertical rolling steel door or b) within the rigid framework of a side sliding, side coiling or side accordion door assembly. Vertically acting or side acting, these egress doors slide with the assembly during open or close movement. In fabric fire and smoke rated curtains, fixed soft-surface egress doors roll up or down within the fabric.

IBC International Building Code

NFPA National Fire Protection Association

Power Assisted Egress A push paddle is located on the surface of the door assembly. When depressed the door is activated and opens or closes under the power of a battery or active current. This applies only to Models AC8807 or AC8814 that comply with egress provisions of the Legacy, ICC and NFPA codes.

Pressure Guides The side rail guides that are the vertical tracks for McKeon Models D200 and D200E. These fire and smoke rated fabric assemblies are extremely flexible and subject to combustion and air movement differential pressures during actual and simulated fire conditions or tests. The McKeon pressure guides are manufactured, designed and tested under UL 10B and UL 10D standards to ensure compliance and prevent blowout or fatigue.

Side Sliding A feature of the S7000 Series only. The fire door assembly panels do not collapse into a stack or roll into the storage pocket. These flexible panels slide horizontally into a wall pocket that is slightly deeper than the clear open width of the space being protected. Side sliding assemblies will negotiate a radius curve of 12 inches without egress and 5 feet with egress doors.

Side Accordion A feature of the AC8000 Series only. The fire door assembly is constructed of single wall 7- or 14-inch panels that collapse together, tethered on a single track, as they fold into a storage pocket. When the assembly is deployed, the panel configuration expands to protect wide-span openings.

Safescape® McKeon manufactured products with this designation offer complying means of egress, regardless of occupant load, when required by the fire and life safety provisions of the building codes.

Soft-Surface Egress Door Unlike conventional hard-surface swing doors with fixed mechanical acting egress hardware, this door assembly is constructed of flexible fabric and requires a different approach to egress technology. A standard hardware latch is not used so is not required to be released as with standard panic or fire exit hardware. A force against the vertical soft-surface fabric door of the assembly will cause the door to swing open, hinging on an attached bottom bar and a full-height connection at the top. After allowing for passage through the door opening the assembly returns into place protecting the opening. The entire leading edge surface is held in place to ensure tight closure.



Over 100 Factory Authorized Distributors World Wide

McKEON DOOR COMPANY

Corporate Headquarters

44 Sawgrass Drive
Bellport, NY 11713 USA
Phone: 800-266-9392
Fax: 631-803-3030
Email: info@mckeondoor.com
www.McKeonDoor.com

Regional Centers

New York City
Los Angeles
Las Vegas
Salt Lake City
Washington DC